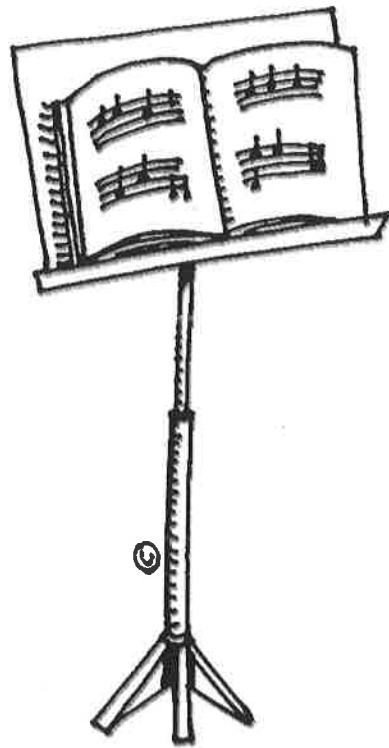


Central Bucks School District

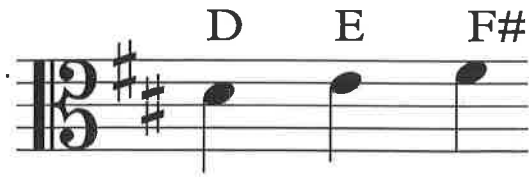
Music Department



Beginning Viola Book 2

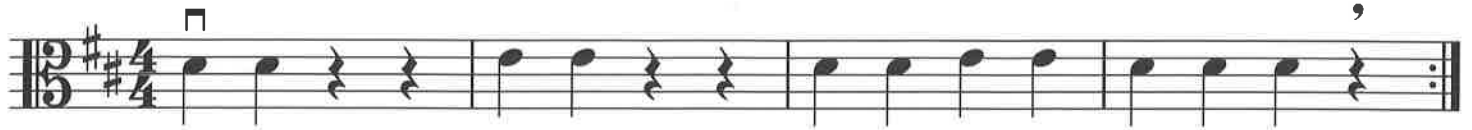
Reading Notes!

Open D is in the 3rd space of the staff (counting from the bottom).
First finger E is on the 4th line.
F# is in the 4th space.



*Key Signature: found at the beginning of each staff, and sets the rule for what notes to play.

1. D and E



2. Exploring F#



3. Stepping Up and Back



4. Steps and Skips



□ = Down bow - pull to right √ = Up Bow - push to left

5. Mary Had A Little Lamb



6. Trial Run

Musical notation for 'Trial Run' in 3/4 time, key of D major. The piece consists of four measures of music. The first measure contains two quarter notes (D4, E4) followed by two eighth rests. The second measure contains two quarter notes (F#4, G4) followed by two eighth rests. The third measure contains four quarter notes (A4, B4, C5, B4). The fourth measure contains a quarter note (A4), a quarter rest, a quarter note (G4), and a quarter rest.

7. Lift Off

' = bow lift - lift the bow to start a new down stroke

Musical notation for 'Lift Off' in 3/4 time, key of D major. The piece consists of four measures of music. Above the first measure is a square bow lift symbol. Above the second measure is an accent mark. Above the third measure is a square bow lift symbol. Above the fourth measure is an accent mark. The notes are: Measure 1: quarter (D4), quarter (E4), eighth rest; Measure 2: quarter (F#4), quarter (G4), eighth rest; Measure 3: quarter (A4), quarter (B4), quarter (C5); Measure 4: quarter (B4), quarter rest, quarter (A4), quarter rest.

8. Au Claire de la Lune

Musical notation for 'Au Claire de la Lune' in 3/4 time, key of D major. The first line consists of four measures. Above the first measure is a square bow lift symbol. The notes are: Measure 1: quarter (D4), quarter (E4), quarter (F#4); Measure 2: half (G4); Measure 3: quarter (A4), quarter (B4), quarter (C5); Measure 4: quarter (B4), half (A4).

Musical notation for 'Au Claire de la Lune' in 3/4 time, key of D major. The second line consists of four measures. The notes are: Measure 1: quarter (G4), quarter (A4), quarter (B4); Measure 2: half (C5); Measure 3: quarter (B4), quarter (A4), quarter (G4); Measure 4: quarter (F#4), quarter (E4), quarter rest.

9. Waves

Musical notation for 'Waves' in 3/4 time, key of D major. The piece consists of four measures of music. Above the first measure is a square bow lift symbol. The notes are: Measure 1: quarter (D4), quarter (E4), quarter (F#4); Measure 2: quarter (G4), quarter (A4), quarter (B4); Measure 3: quarter (C5), quarter (B4), quarter (A4); Measure 4: quarter (G4), quarter (F#4), quarter rest.

10. Cuckoo

☐ = half rest - two beats of silence - "rest-rest"

Musical notation for 'Cuckoo' in 3/4 time, key of D major. The first line consists of four measures. Above the first measure is a square bow lift symbol. The notes are: Measure 1: quarter (D4), quarter rest, quarter rest; Measure 2: quarter (E4), quarter rest, quarter rest; Measure 3: quarter (F#4), quarter (G4), quarter (A4); Measure 4: quarter (B4), quarter rest, quarter (A4), quarter rest.

Musical notation for 'Cuckoo' in 3/4 time, key of D major. The second line consists of four measures. Above the first measure is a square bow lift symbol. The notes are: Measure 1: quarter (G4), quarter rest, quarter rest; Measure 2: quarter (A4), quarter rest, quarter rest; Measure 3: quarter (B4), quarter (A4), quarter (G4); Measure 4: quarter (F#4), quarter rest, quarter (E4), quarter rest.

Reading G and A

G is on the fifth line.

A is in the space above the staff.

D E F# G A 3



11. Exploring G



12. Misty Fjord



13. Exploring A






14. Riding the Rails



15. Ode to Joy



 = quarter note = 1 beat = "ta"
 = eighth note pair = 1 beat = "ti-ti"
 = two eighth note pairs = 2 beats = "ti-ti-ti-ti"

16. Motorcycle Down Up

17. Oats, Peas, and Beans

18. Run Pony

19. Pony Run

Reminder: $\text{♩} = \text{half note} = 2 \text{ beats} = \text{"slow bow"}$

20. Ode to Joy - Advanced Version

Musical score for 'Ode to Joy - Advanced Version' in G major (one sharp) and 4/4 time. The score consists of four staves of music. The first staff begins with a square box above the first note. The second staff continues the melody. The third staff features a square box above the first note and a comma above the final note. The fourth staff concludes the piece with a double bar line.

21. Lightly Row

Musical score for 'Lightly Row' in G major (one sharp) and 4/4 time. The score consists of four staves of music. The first staff begins with a square box above the first note. The second staff features a 'V' symbol above the first note. The third and fourth staves continue the melody and end with a double bar line.

6

Reading B:

B is on the first ledger line above the staff.

D E F# G A B

A musical staff in treble clef with a key signature of one sharp (F#). The notes D, E, F#, G, A, and B are written from left to right. Note B is positioned on the first ledger line above the staff. The notes are connected by a horizontal line.

23. New Note B

Two staves of musical notation in treble clef, key signature of one sharp (F#), and 4/4 time. The first staff contains two measures: the first measure has a quarter note B on the first ledger line, followed by quarter notes D, E, F#, G, A, and B; the second measure has quarter notes D, E, F#, G, A, and B, followed by a quarter rest. The second staff contains two measures: the first measure has a quarter note B on the first ledger line, followed by quarter notes D, E, F#, G, A, and B; the second measure has quarter notes D, E, F#, G, A, and B, followed by a quarter rest.

24. Hot Cross Buns

Musical notation in treble clef, key signature of one sharp (F#), and 4/4 time. The staff contains four measures: the first measure has a quarter note B on the first ledger line, followed by quarter notes D, E, F#, G, A, and B; the second measure has quarter notes D, E, F#, G, A, and B; the third measure has quarter notes D, E, F#, G, A, and B; the fourth measure has quarter notes D, E, F#, G, A, and B.

25. Baa, Baa, Black Sheep

Three staves of musical notation in treble clef, key signature of one sharp (F#), and 4/4 time. Each staff contains four measures: the first measure has a quarter note B on the first ledger line, followed by quarter notes D, E, F#, G, A, and B; the second measure has quarter notes D, E, F#, G, A, and B; the third measure has quarter notes D, E, F#, G, A, and B; the fourth measure has quarter notes D, E, F#, G, A, and B.

26. Skipping Around

Musical notation in treble clef, key signature of one sharp (F#), and 4/4 time. The staff contains four measures: the first measure has a quarter note B on the first ledger line, followed by quarter notes D, E, F#, G, A, and B; the second measure has quarter notes D, E, F#, G, A, and B; the third measure has quarter notes D, E, F#, G, A, and B; the fourth measure has quarter notes D, E, F#, G, A, and B, followed by a quarter rest.

27. Frere Jacques - round

Two staves of musical notation for 'Frere Jacques - round'. The key signature is one sharp (F#) and the time signature is 4/4. The first staff begins with a square box above the first note. The melody consists of quarter notes and half notes.

28. Old MacDonald

Four staves of musical notation for 'Old MacDonald'. The key signature is one sharp (F#) and the time signature is 4/4. The first staff begins with a square box above the first note. The second staff begins with a 'V' above the first note. The melody consists of quarter notes and half notes.

29. This Old Man

Two staves of musical notation for 'This Old Man'. The key signature is one sharp (F#) and the time signature is 4/4. The first staff begins with a square box above the first note. The second staff contains a comma above the first note and a square box above the second note. The melody consists of quarter notes and half notes.

30. Rocky Mountain

Musical score for "Rocky Mountain" in 3/4 time, key of D major (two sharps). The score consists of four staves. The first staff begins with a treble clef, a key signature of two sharps, and a 3/4 time signature. The melody is written in a single line. The second staff continues the melody. The third staff continues the melody. The fourth staff concludes the piece with a double bar line.

31. London Bridge

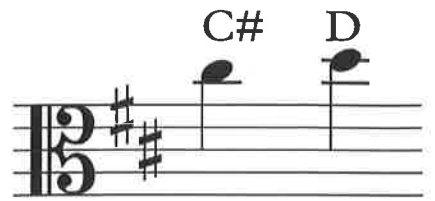
Musical score for "London Bridge" in 3/4 time, key of D major (two sharps). The score consists of two staves. The first staff begins with a treble clef, a key signature of two sharps, and a 3/4 time signature. The melody is written in a single line. The second staff concludes the piece with a double bar line.

32. Chicken on a Fence Post

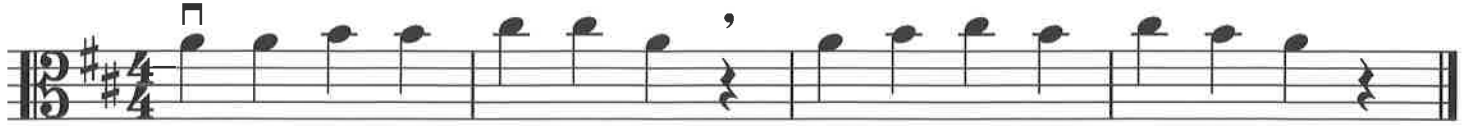
Musical score for "Chicken on a Fence Post" in 3/4 time, key of D major (two sharps). The score consists of two staves. The first staff begins with a treble clef, a key signature of two sharps, and a 3/4 time signature. The melody is written in a single line. The second staff concludes the piece with a double bar line.

Reading C# and high D

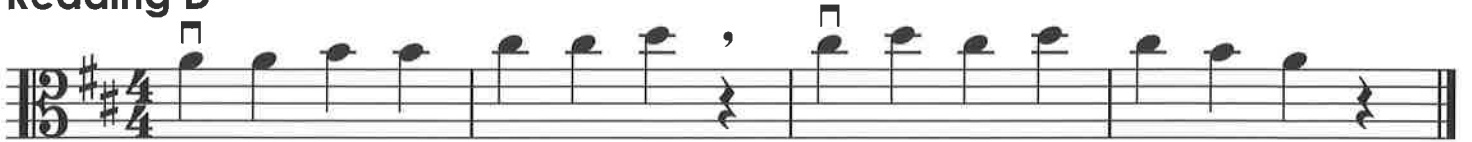
C# is in the space above the first ledger line.
High D is on the second ledger line above the staff.



33. Reading C#



34. Reading D



35. Steppes of A-sia

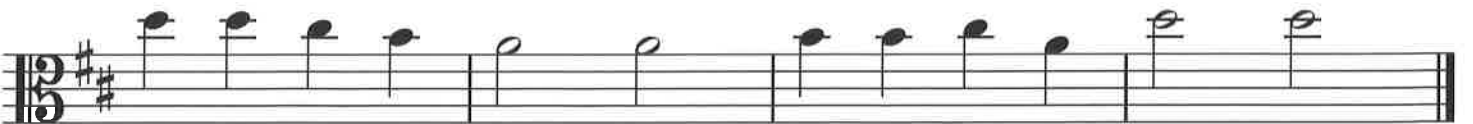


36. Bile Them Cabbage - Duet



37. Scotland's Burning



38. French Folk Song in 3**39. Morning Dance**

40. Sourwood Mountain

Musical score for "Sourwood Mountain" in 3/4 time, key of D major. The score consists of four staves of music. The first staff begins with a treble clef, a key signature of two sharps (F# and C#), and a 3/4 time signature. The melody is written in a simple, stepwise fashion across the four staves, ending with a double bar line.

41. John Ryan's Polka

Musical score for "John Ryan's Polka" in 4/4 time, key of D major. The score consists of four staves of music. The first staff begins with a treble clef, a key signature of two sharps (F# and C#), and a 4/4 time signature. The melody features a prominent eighth-note pattern in the first two staves, followed by a more straightforward eighth-note melody in the third and fourth staves, ending with a double bar line.

42. Can Can

Musical score for "Can Can" in 3/4 time, key of D major (two sharps). The score consists of four staves of music. The first staff begins with a treble clef, a key signature of two sharps (F# and C#), and a 3/4 time signature. A fermata is placed over the first note (D4). The melody consists of quarter notes and half notes. The second staff continues the melody with quarter notes and half notes. The third staff continues the melody with quarter notes and half notes. The fourth staff concludes the piece with quarter notes and half notes, ending with a double bar line.