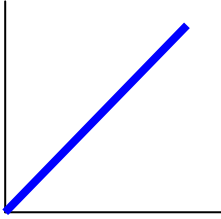


## Analysis of Graphs

*The title of a graph should always be written as Y vs. X (substituting the actual quantities graphed for Y and X)*



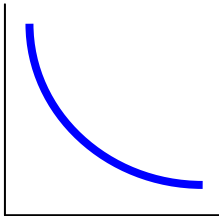
**Y\* is directly proportional to X\***

*\* substitute the actual quantities for X and Y*

**In Logger Pro:** Choose Linear fit

**In Excel:** Choose Linear

**General Equation:**



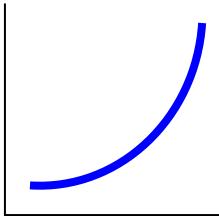
**Y\* is inversely proportional to X\***

*\* substitute the actual quantities for X and Y*

**In Logger Pro:** Choose Inverse

**In Excel:** Choose Polynomial (order 2)

**General Equation:**



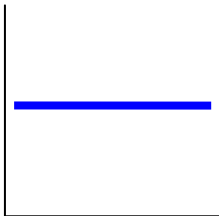
**Y\* is proportional to X<sup>2</sup>**

*\* substitute the actual quantities for X and Y*

**In Logger Pro:** Choose Variable Power (enter B = 2)

**In Excel:** Choose Polynomial (order 2)

**General Equation:**

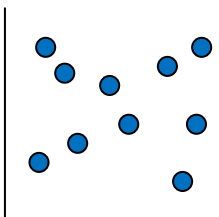


**Y\* is not dependent on X\***

*\* substitute the actual quantities for X and Y*

...It's a horizontal line

**In Logger Pro:** You can choose linear fit, but the only thing you will be able to read is the y-intercept. The slope should be zero.



...It just won't fit!