

Study Guide for Chapter 14: Mohenjodaro

What popular board game may have been invented in Mohenjodaro? _____

What types of food did they eat?

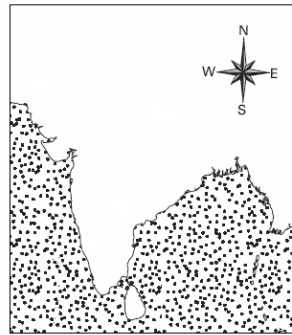
Describe one of the types of games they played...

What types of clothes did they wear?

Mohenjodaro developed in which river valley? _____

Locate and label Mohenjodaro on the map of India.

The Indus River Valley



While the Great Pyramid was being built in Egypt, Mohenjodaro was an active settlement during _____ B.C.E.

What did the people of Mohenjodaro do to protect themselves from enemies?

Because streets divided the lower city into blocks, we can say that Mohenjodaro was _____ city.

What are some theories that help to explain the disappearance of Mohenjodaro?

How did modern archeologists learn about Mohenjodaro's existence?

What evidence supports the idea that the people of Mohenjodaro had uniform ways to measure?

True or False: _____ Mohenjodaro had a large community bath tub.

What can we learn from ancient statues found at Mohenjodaro?

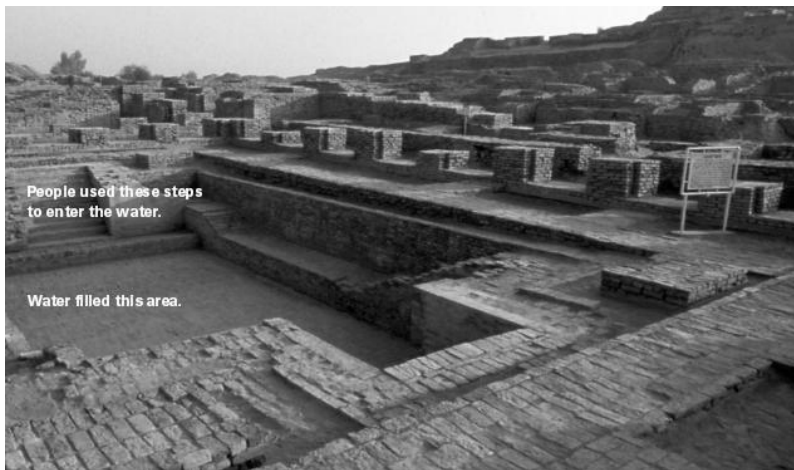
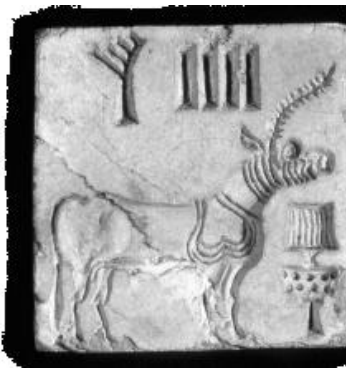
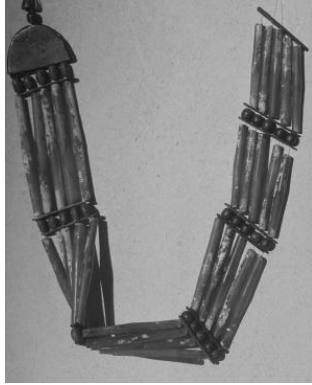
True or False: _____ People of Mohenjodaro made seals that show the types of animals in the area.

The _____ system made Mohenjodaro a unique city for its time.

Since the lower city was home to most people in Mohenjodaro, what was the citadel used for?

True or False: _____ People in Mohenjodaro all lived in the same types of homes.

Be able to tell something about each artifact listed on the reverse side of this paper.



People used these steps to enter the water.

Water filled this area.

