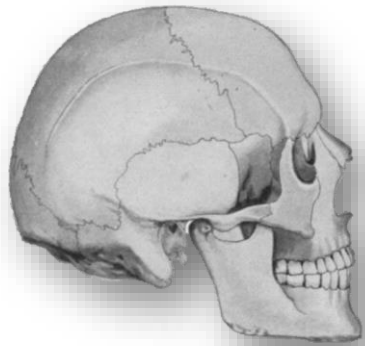
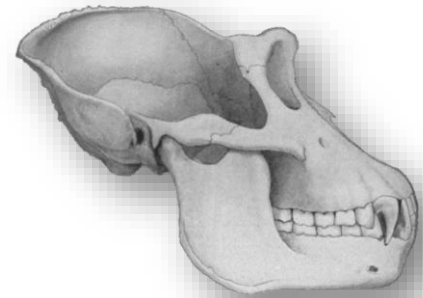


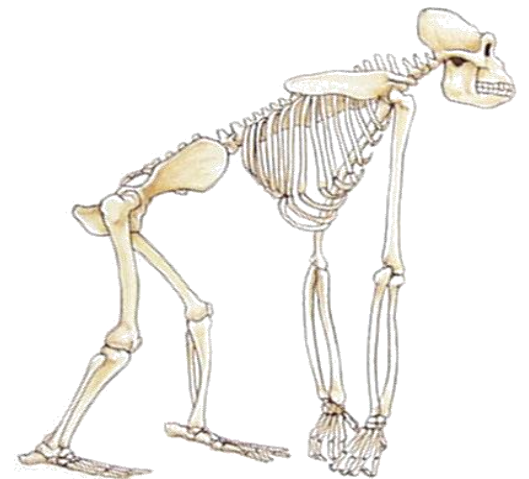
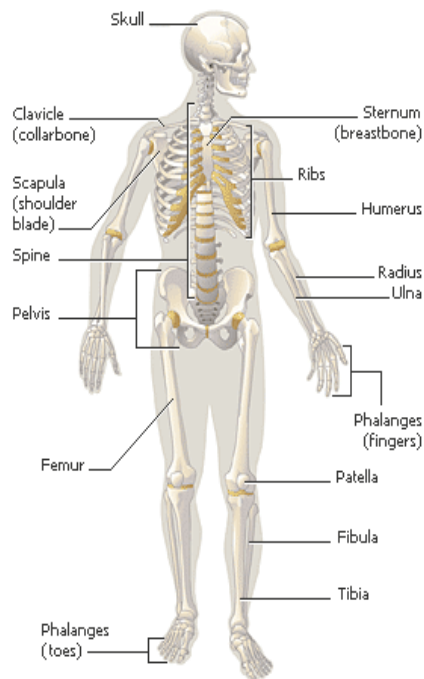
Humans vs. Apes



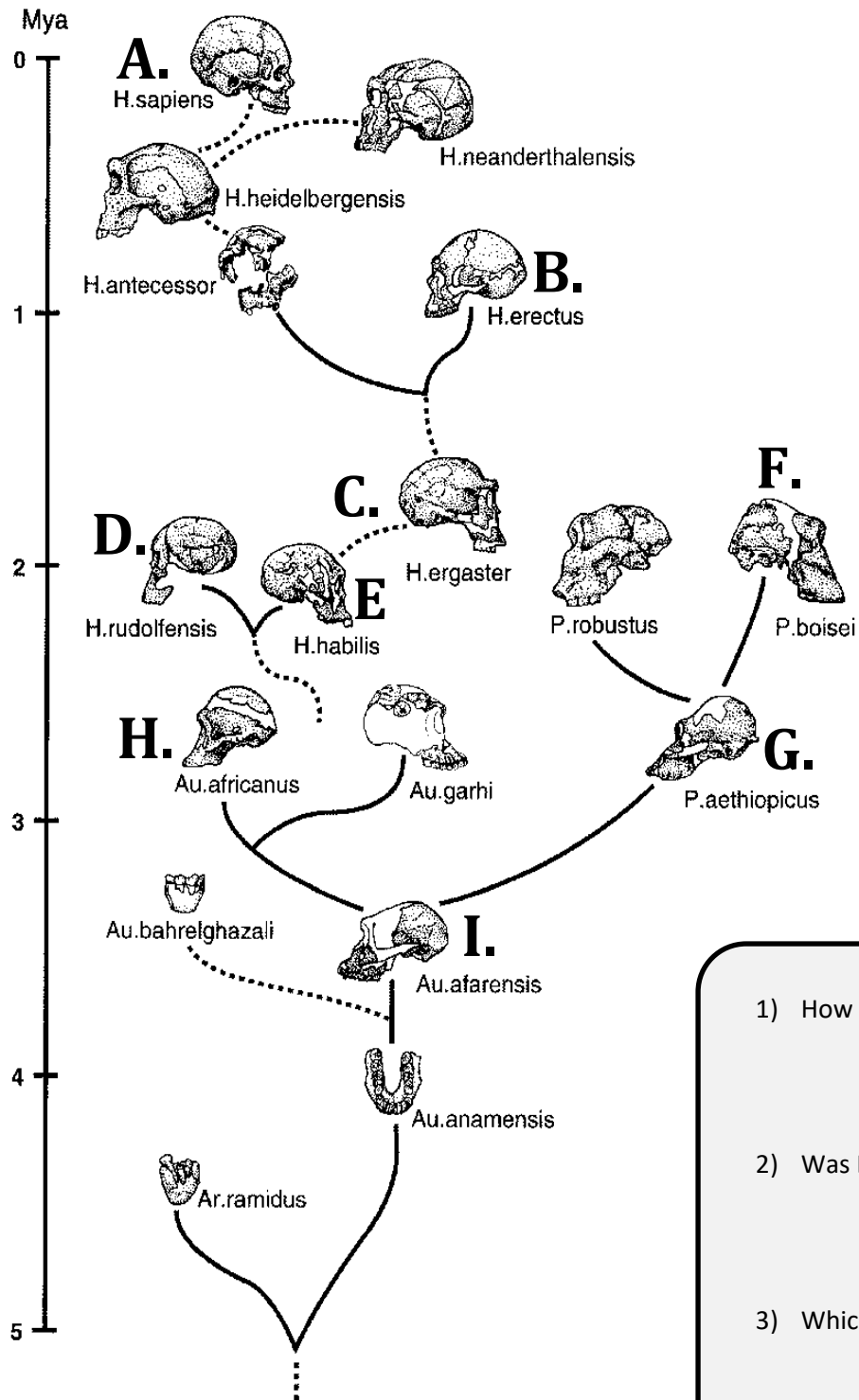
Human



Gorilla



Trait	Human	Ape
Forehead		
Chin		
Sagittal Crest		
Prognathism		
Facial Slope		
Supra-orbital Ridge		
Dental Arcade		
Cranial Volume		
Binocular Vision		
Bipedalism		
Spinal Column		
Foramen Magnum		
Pelvis		
Opposable Thumbs		
Opposable Toes		



The "Real" Family Tree

Species	Alias	Age range
A. <i>Homo sapiens</i>		200,000 to present
B. <i>H. erectus</i>		1.8 M - 50,000
C. <i>H. ergaster</i>		1.8 - 1.3 M
D. <i>H. rudolfensis</i>		1.9 - 1.8 M
E. <i>H. habilis</i>		2.3 - 1.2 M
F. <i>Australopithecus boisei</i>		2.6 - 1.2 M
G. <i>A. aethiopicus</i>		2.7 - 2.5 M
H. <i>A. africanus</i>		3.0 - 2.0 M
I. <i>A. afarensis</i>		3.9 - 2.9 M

- 1) How close was your family tree to this one? Did you guess the correct "Lucy" skull?
- 2) Was Lucy the first hominid?
- 3) Which species of hominid was the last to go extinct (our closest relative of all time)?