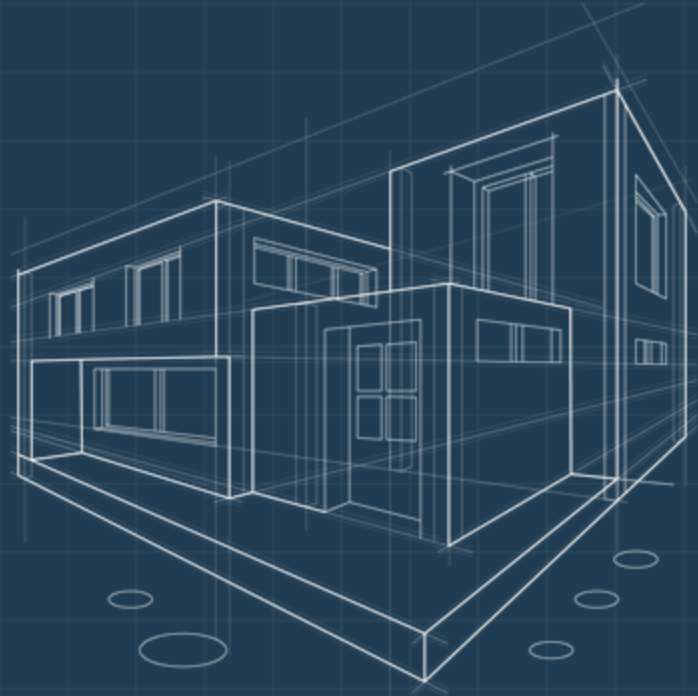


Doyle, Kutz & Linden Elementary Schools



CB East Town Hall – February 27, 2025





Our Agenda this Evening

Making the Most of Our Time Together

- Briefly review information shared via our Finance & Operations Committee meetings.
- Address pre-submitted questions.
- Take a Brief Break – allow for submitting additional questions.
- Address additional questions.

~~Original Options~~ → Remaining Options

Option	Details	Costs
A	Build a new school that will welcome students from Doyle, Kutz, and Linden. Renovate the remaining five schools.	\$218,662,212
B	Renovate all eight schools.	\$234,528,413 \$241,411,064
C	Build a new school that will welcome students from Doyle, Kutz, and Linden. Build a new Warwick. Renovate the remaining four schools.	\$271,571,643
D	Build a new school that welcomes students from Doyle and Linden. Renovate the remaining six schools.	\$249,745,659 \$240,205,342

Commitments & Expectations

Each time we receive bids for a project, we will review the projected costs for future work and determine if we need to adjust our assumptions. We will be transparent in our conversations in Finance & Operations meetings if/when we need to adjust projected costs.

We recently received bids for the classroom addition at Mill Creek Elementary School. We adjusted estimated costs on other projects based on the data we received from these bids.

If economic conditions change drastically (i.e., interest rates increase or decrease, tariffs begin affecting local projects, etc.), we will review the projected costs for future work and determine if we need to adjust our assumptions. These conversations will take place in our Finance & Operations meetings.

Addressing the Changes

What caused these estimates to change?

- Renovate all eight schools.
 - Original estimate: \$234,528,413
 - Revised estimate: \$241,411,064
- Build a new school to welcome students from Doyle and Linden. Renovate the remaining six schools.
 - Original estimate: \$249,745,659
 - Revised estimate: \$240,205,342



Renovate All 8 Schools

Changes to Existing Capital:

- (\$250,000) Removed 2024-2025 spending at Kutz for watermain
- (\$100,000) Reduced Traffic light cost at Titus
- (\$400,000) Reduced Generator cost at Warwick
- Changes to Renovations Estimates
- \$7,926,381 at Kutz for the addition
- Doyle & Gayman updates offset

Elementary Update	Barclay	27,907
	Buckingham	320,731
	Doyle	(2,835,113)
	Gayman	2,665,888
	Kutz	7,926,381
	Linden	(30,097)
	Titus	391,610
	Warwick	(834,656)
Elementary Update Total		7,632,651

Build a DL School and Renovate Remaining 6

Build a new elementary school on Doyle's property to combine populations of Doyle & West-tracked Linden students - Student population: 595 (Doyle 380 + West Linden 215 as of 2033-34)

East Tracked Linden would be relocated to Cold Spring keeping their middle & high track the same - Student Population: 514 (Cold Spring 424+ East Linden 90 as of 2033-34)

Kutz - Full renovation + Addition – (383 as of 2033-2034)

Remaining schools' full renovation

- Reduces square footage on building
- Added funds to Kutz for addition
- Added funds to Gayman

Elementary Update	Barclay	Full Renovation	\$576,505
	Buckingham	Full Renovation	\$320,731
	Doyle	New Building (Linden)	(\$21,409,620)
	Gayman	Full Renovation	\$2,665,889
	Kutz	Full Renovation	\$7,926,381
	Titus	Full Renovation	\$391,611
	Warwick	Full Renovation	\$338,188
Elementary Update Total			(\$9,190,317)

Renovating Kutz Elementary

Renovate the majority of the building.

Raze the 1936 section of the school and replace it with a new addition.

Approximate Cost
\$7,926,381



Doyle and Linden Elementary Schools

Doyle Elementary – Approximate Cost: TBD

Develop a request for proposal (RFP) for the renovation of Doyle (“take it down to the studs”).



Linden Elementary – Approximate Cost: TBD

Develop a request for proposal (RFP) for the renovation of Linden (“take it down to the studs”) and provide multiple options for HVAC.



We are Listening to the Community's Comments and Concerns

Avoid building a CBSD “mega school” that would combine the Doyle, Kutz, and Linden communities.

Retain the “small town feel” for each school community.

Smaller schools have a strong sense of community between and among the students, staff, and families.



The “DKL” option is off the table.

We are investigating various options for renovating Doyle and Linden.

We are exploring additional options for HVAC at Linden.



PLANNING FOR THE FUTURE

Addressing Pre-Submitted Questions



PLANNING FOR THE FUTURE
**Brief Break and Opportunity to Submit
Questions**



PLANNING FOR THE FUTURE

Addressing Additional Questions

Thank You for
Attending



We Appreciate Our Community!

