



CENTRAL BUCKS  
SCHOOL DISTRICT

**CELEBRATION OF OUR SCHOOLS - 2020**

The background of the entire image is a dark blue gradient. It is decorated with numerous white musical notes, including eighth notes, quarter notes, and treble clefs, scattered across the top and bottom sections. A solid light blue horizontal band runs across the middle of the image, serving as a background for the text.

CENTRAL BUCKS SOUTH HIGH SCHOOL

# SOUTHSIDE A CAPPPELLA

DIRECTED BY JOE STELLINO



CENTRAL BUCKS  
SCHOOL DISTRICT



## **OUR MISSION**

The Central Bucks Schools will provide all students with the academic and problem-solving skills essential for personal development, responsible citizenship, and life-long learning.





Each of these “Pillars of Excellence” has a guiding vision and focus areas with measurable goals that were designed to set forth a clear path for continuous improvement and educational excellence.



# OUR STUDENTS BECOME:

- Informed and Responsible Citizens
- Effective Communicators
- Collaborative Workers
- Self-Directed Learners
- Skilled in Technology
- Quality Producers
- Complex Thinkers



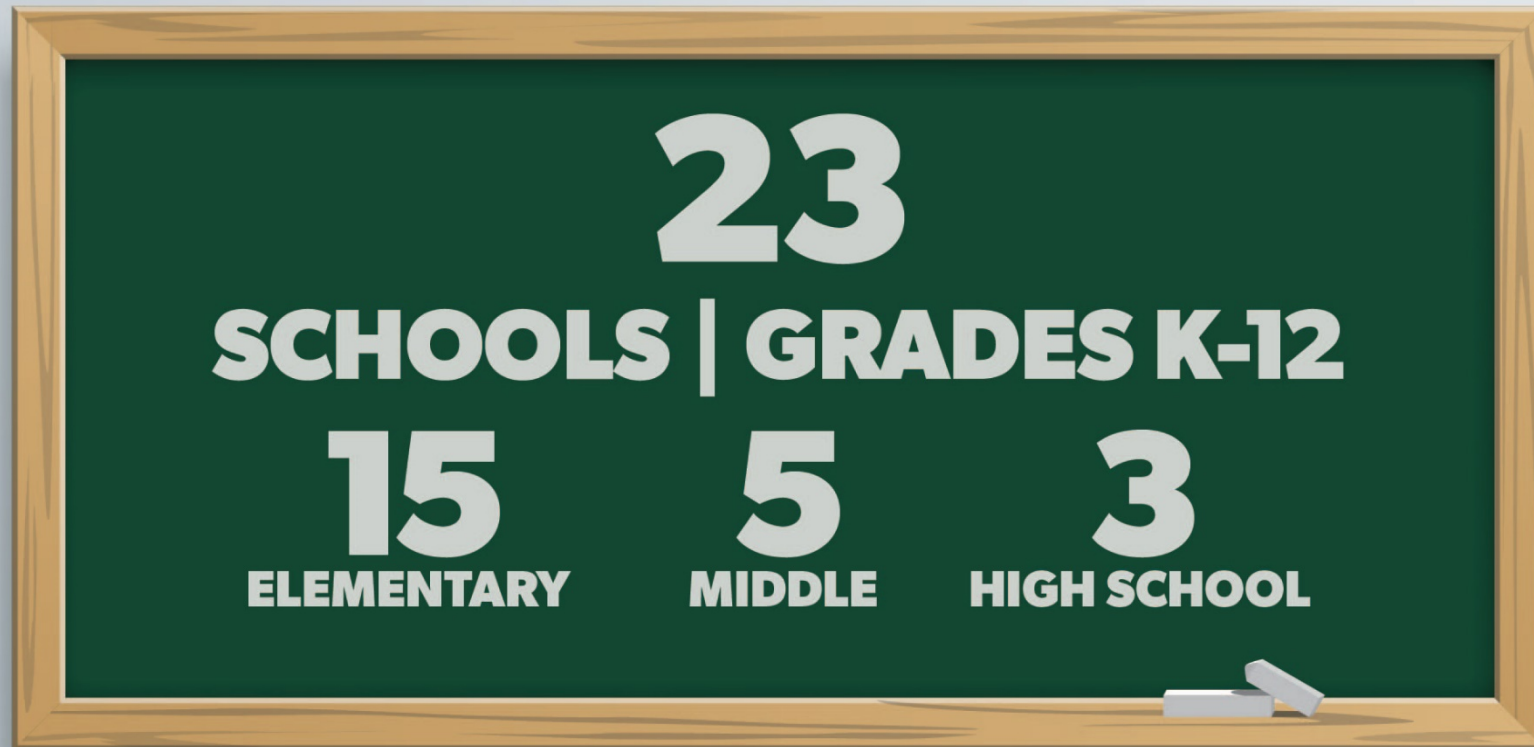
# 9 MUNICIPALITIES

## BOROUGHs

CHALFONT, DOYLESTOWN AND NEW BRITAIN

## TOWNSHIPS

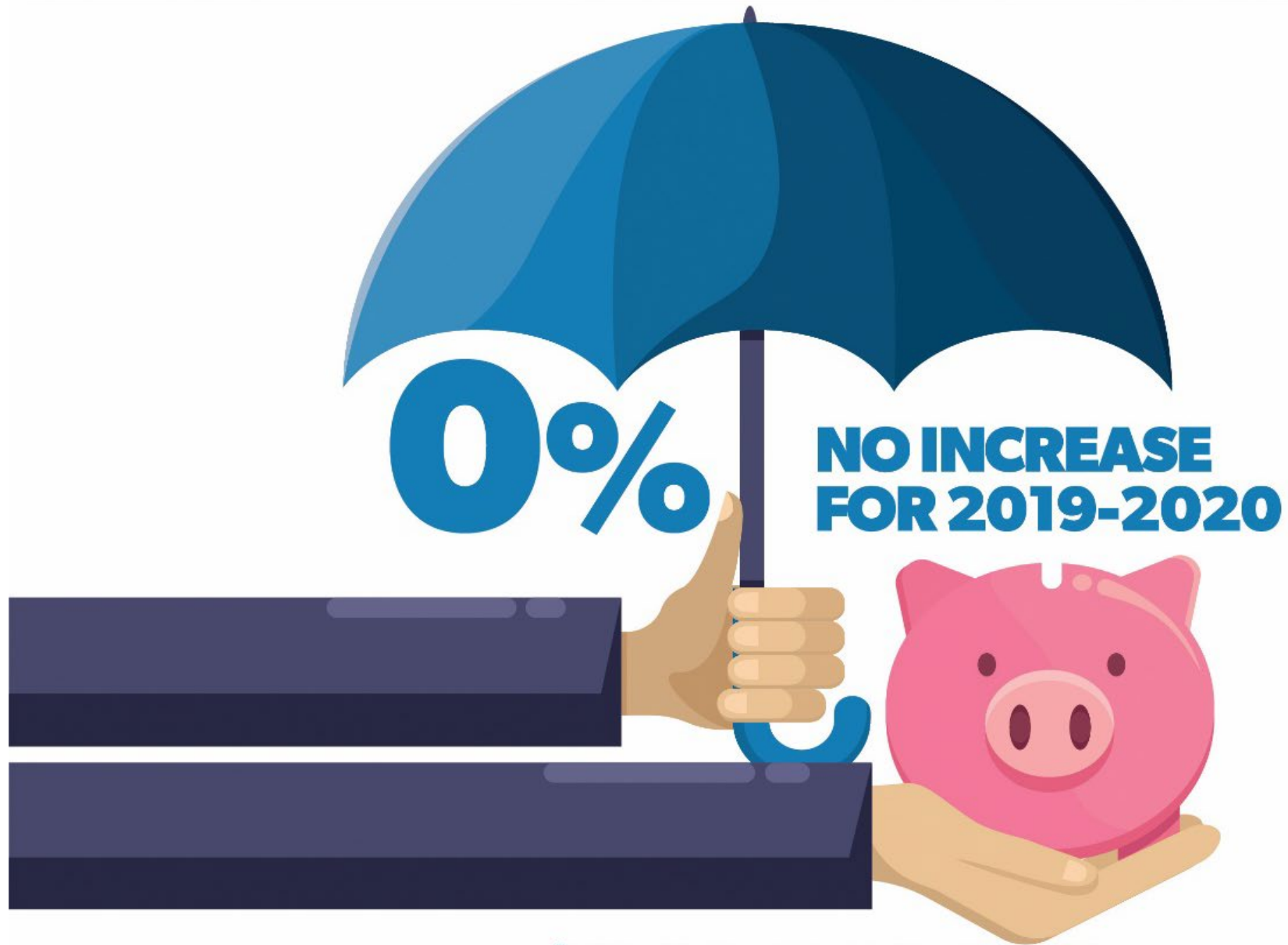
BUCKINGHAM, DOYLESTOWN, NEW BRITAIN  
PLUMSTEAD, WARRINGTON AND WARWICK



# **3,000+** **FACULTY AND STAFF**

**70%**  
**OF STAFF WITH MORE THAN  
10 YEARS OF SERVICE**

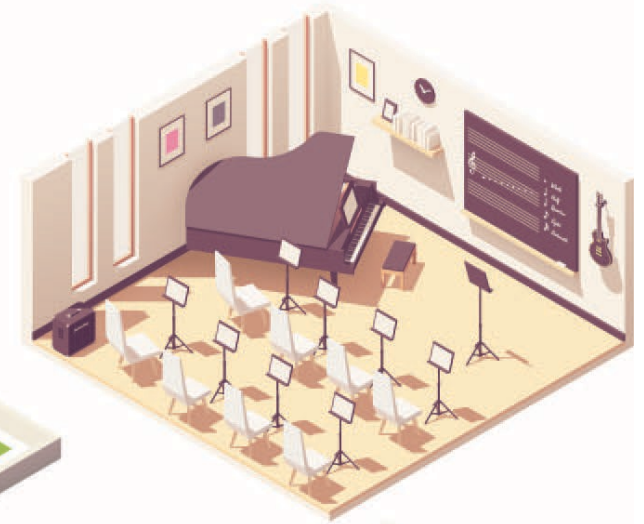
**86%**  
**TEACHERS HOLD A  
MASTER'S DEGREE  
OR GREATER**



**\$342,248,613**

**WITH NO INCREASE TO THE REAL ESTATE TAX MILLAGE RATE**





**240+**  
**COURSE OFFERINGS FOR  
SECONDARY STUDENTS**

**280+**  
**EXTRA-CURRICULAR  
OPPORTUNITIES**

**60**  
**CO-CURRICULAR  
PROGRAMS**

**43**  
**PIAA SPORTS**



ELA



PSSA  
CENTRAL BUCKS  
GRADES 4-8

#2

OF 13 PUBLIC SCHOOL DISTRICTS  
IN BUCKS COUNTY

#31

OF 648 PARTICIPATING LEAs  
IN THE COMMONWEALTH



MATH



PSSA  
CENTRAL BUCKS  
GRADES 4-8

#3

OF 13 PUBLIC SCHOOL DISTRICTS  
IN BUCKS COUNTY

#53

OF 647 PARTICIPATING LEAs  
IN THE COMMONWEALTH



ALGEBRA  
TEST SCORES  
CENTRAL BUCKS

#1

OF 13 PUBLIC SCHOOL DISTRICTS IN BUCKS COUNTY

#11

OF 597 PARTICIPATING LEAs  
IN THE COMMONWEALTH



LITERATURE  
TEST SCORES  
CENTRAL BUCKS

#2

OF 13 PUBLIC SCHOOL DISTRICTS IN BUCKS COUNTY

#18

OF 587 PARTICIPATING LEAs  
IN THE COMMONWEALTH



BIOLOGY  
TEST SCORES  
CENTRAL BUCKS

#2

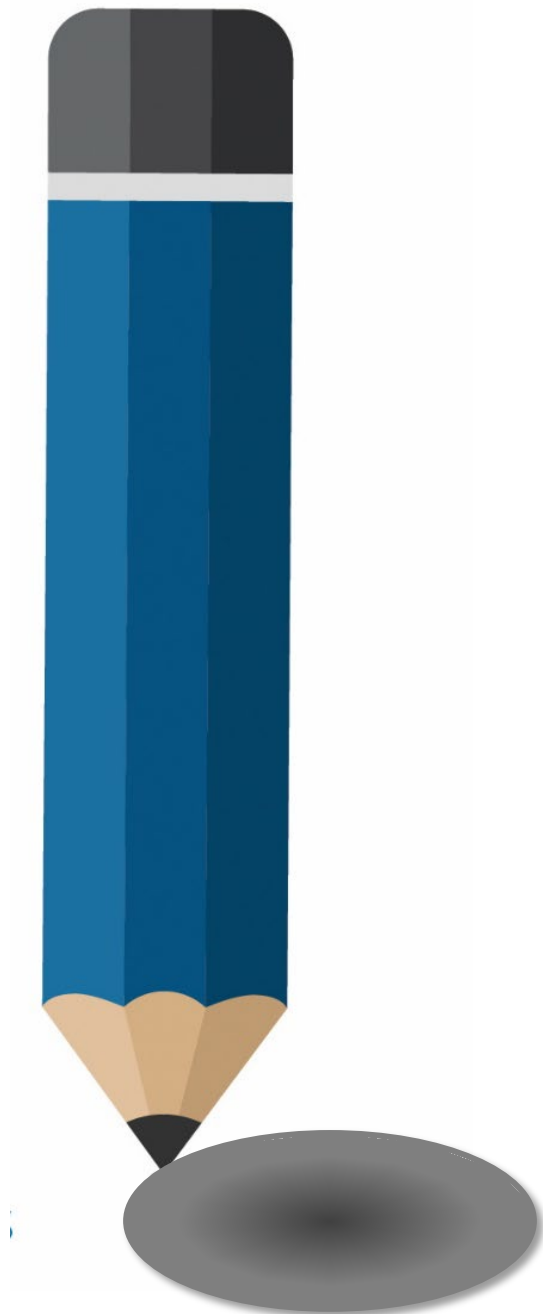
OF 13 PUBLIC SCHOOL DISTRICTS IN BUCKS COUNTY

#16

OF 587 PARTICIPATING LEAs  
IN THE COMMONWEALTH



**GRADUATE IN 4 YEARS**



**CB 1215**



**1082**



**1067**

**AVERAGE  
SAT SCORE**

**CB 26.1**



**23.6**



**20.8**

**MEAN  
COMPOSITE  
ACT SCORE**

# COLLEGE ACCEPTANCES CLASS OF 2019

**TOP 10**

**PENN STATE UNIV.**

**TEMPLE UNIV.**

**WEST CHESTER UNIV.**

**UNIV. OF PITTSBURGH**

**BUCKS COUNT C.C.**

**DREXEL UNIV.**

**UNIV. OF DELAWARE**

**JAMES MADISON UNIV.**

**BLOOMSBURG UNIV.**

**MILLERSVILLE UNIV.**



Cornell University



BROWN



PRINCETON  
UNIVERSITY



COLUMBIA UNIVERSITY  
IN THE CITY OF NEW YORK





CENTRAL BUCKS  
SCHOOL DISTRICT

# MEETING THE NEEDS OF ALL LEARNERS

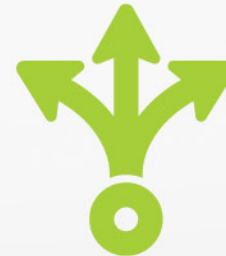
TECHNOLOGY | COMMUNITY CONNECTIONS | TEACHING & LEARNING | FINANCES | FACILITIES



**ACCESS**



**RESOURCES**



**OPPORTUNITIES**



A collection of white musical notes, including eighth, quarter, and half notes, as well as treble clefs, scattered across a dark blue background at the top of the page.

# CENTRAL BUCKS WEST HIGH SCHOOL JAZZ ENSEMBLE

DIRECTED BY NEIL DELSON

A collection of white musical notes, including eighth, quarter, and half notes, as well as treble clefs, scattered across a dark blue background at the bottom of the page.