

PMEA DISTRICT 11 STRING AUDITIONS 2021-2022

THE AUDITION WITH SCORING BREAKDOWN

The Audition will consist of three parts.

PART 1A: MAJOR SCALES 30% OF THE TOTAL SCORE

PART 1B: CHROMATIC SCALES

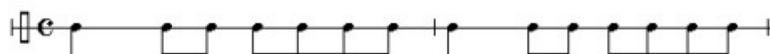
PART 2: SOLO 50% OF THE TOTAL SCORE

PART 3: SIGHT -READING 20% OF THE TOTAL SCORE

PART 1A: MAJOR SCALES

1. All students must be prepared to perform the following scales from memory. C, F, Bb, Eb, Ab, G, D, A, E

2. Major Scales must be performed to the following rhythm.



3. The minimum required tempo for all scales is Quarter Note = 120. Students may perform scales at a faster tempo if they so choose provided the tempo is steady.

4. Students must be prepared to play all major scales slurred with one bow per octave or with separate bows for each note.

5. The following octaves for major scales will be asked with no variation.

INSTRUMENT	OCTAVES	C	F	Bb	Eb	Ab	G	D	A	E
VIOLIN	THREE	X	X	X	X	X	X	X	X	X
VIOLA AND CELLO	TWO			X		X			X	
	THREE	X	X		X		X	X		X
BASS	ONE				X			X		
	TWO	X	X	X		X	X		X	X

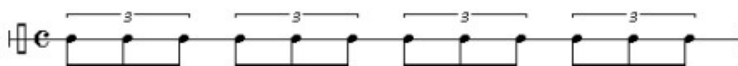
PART 1B: CHROMATIC SCALES

1. The following octaves will be required for the audition with no variation:

INSTRUMENT	OCTAVES	RANGE
VIOLIN	THREE	G - G
VIOLA	THREE	C - C
CELLO	THREE	C - C
BASS	TWO	E - E

2. Students must be prepared to play chromatic scales from memory.

3. Chromatic scales will be played using the following rhythm:



4. The minimum tempo for chromatic scales is quarter note = 120. Students may perform at a faster tempo provided the tempo is steady.

5. Students must be prepared to perform the chromatic scale with a slurred articulation at three notes per bow.

PART 2: SOLO (See the chart below for your instrument assignment)

VIOLIN	<i>Concerto No. 4 in D major K.218, Mozart – 1st mvt, NO Cadenza – G Schirmer Inc. LB890 #50256820</i>
VIOLA	<i>Concerto No. 1, Accolay - Schirmer Edition, Vol. 1785</i>
CELLO	<i>Concerto No. 4 in G major, Op. 65, Golterman - 1st mvt. - International Music Co. #1606 – ed. Rose</i>
BASS	<i>Sonata in E minor, Marcello - 1st & 2nd mvts. - International Music Co. #1050 – ed. Zimmerman</i>

USE OF XEROX COPIES AT THE AUDITION IS PROHIBITED!