

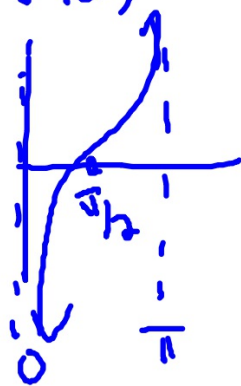
1) $y = -\cot(\theta \pm 90^\circ)$

Amp: none

PD: π

Chgs: Refl. x-axis
L $\pi/2$

Asm: $-\pi/2, \pi/2$



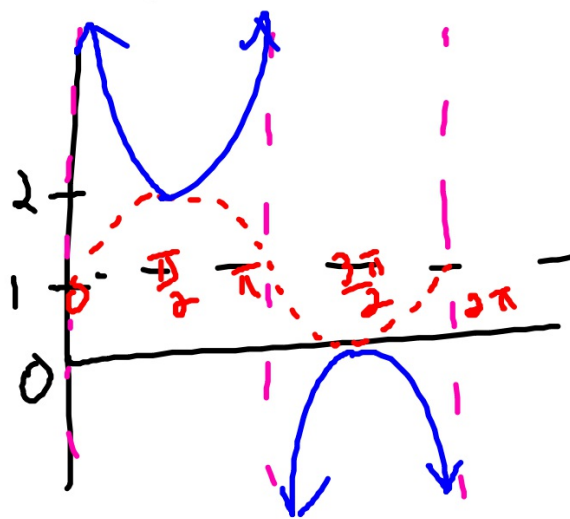
2) $y = \csc \theta \neq 1$

Amp: 1

PD: 2π

Chgs: U

Asm: $0, \pi, 2\pi$



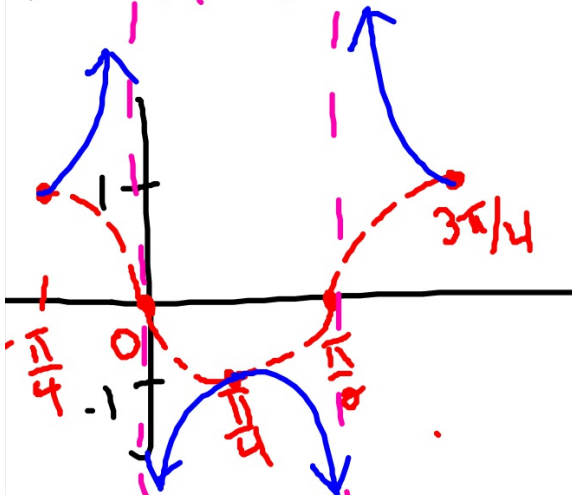
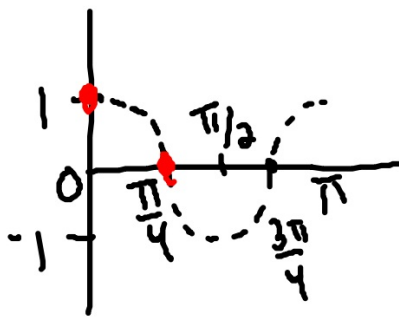
$$y = \sec(2(\theta + \pi/4))$$

Amp: 1

Ps: π

Chgs: $L \pi/4$

Asm: $0, \pi/2$



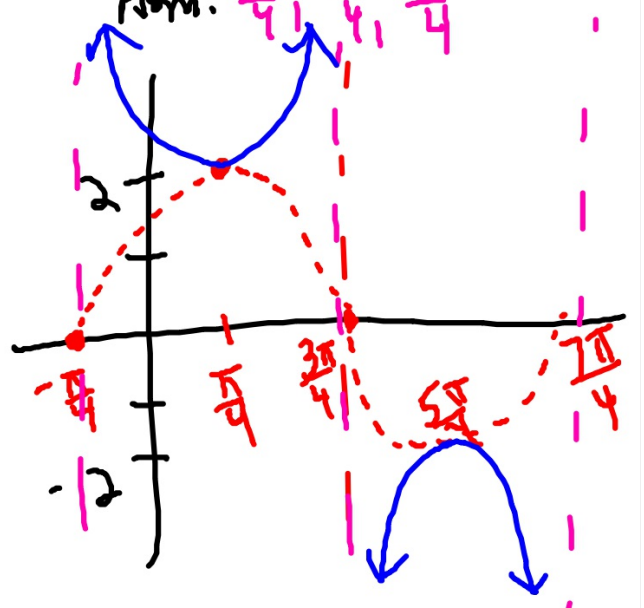
$$(14) \quad y = 2 \csc(\theta + \pi/4)$$

Amp: 2

Ps: 2π

Chgs: $L \pi/4$

Asm: $-\pi/4, 3\pi/4, 7\pi/4$



$$y = \frac{1}{2} \csc(\theta - \pi/2) - 2$$

Amp: $\frac{1}{2}$

P: 2π

Arg: D 2
R $\pi/2$

Asym: $\frac{\pi}{2}, \frac{3\pi}{2}, \frac{5\pi}{2}$

