

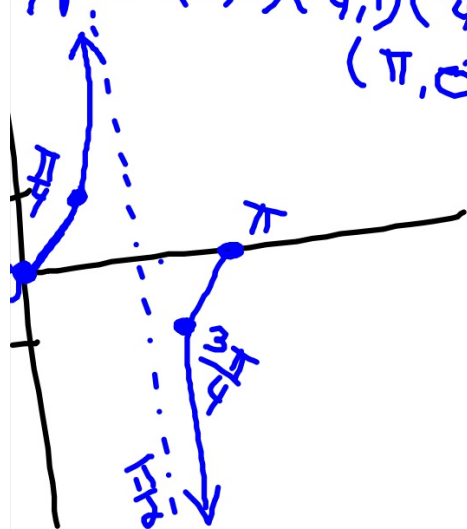
15 wkst # 21-25 → Tan graphs

1) $y = \tan \theta$

p: none Cys: none

: π Asm: $\pi/2$

Key pts: $(0,0)$ $(\frac{\pi}{4}, 1)$ $(\frac{3\pi}{4}, -1)$
 $(\pi, 0)$

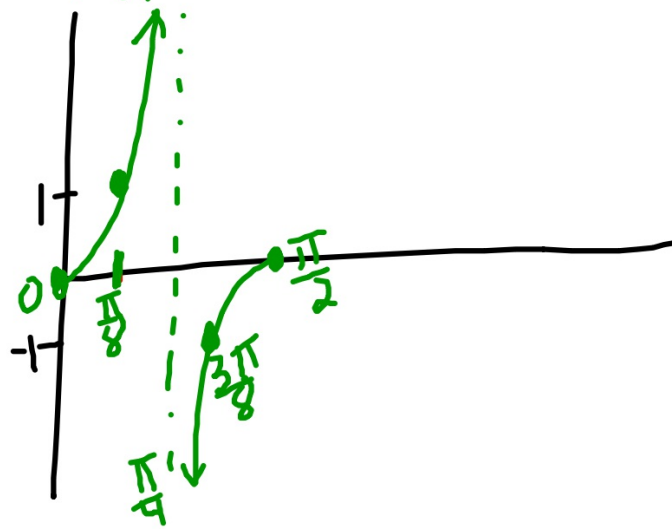


2) $y = \tan 2\theta$

Amp: none Cys: none

PJ: $\pi/2$ Asm: $\pi/4$

Key pts: $(0,0)$ $(\frac{\pi}{8}, 1)$ $(\frac{3\pi}{8}, -1)$ $(\frac{\pi}{2}, 0)$

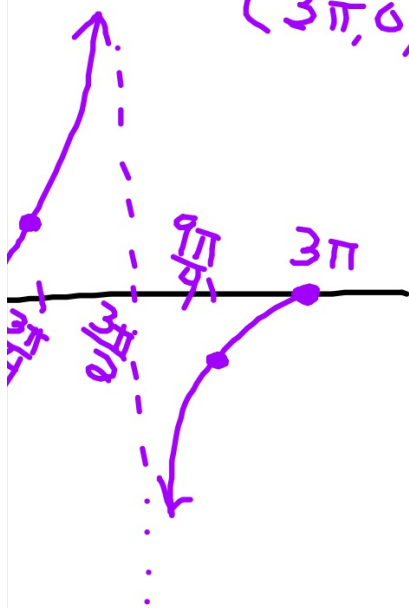


$$y = \tan \frac{1}{3}\theta$$

Amplitude: none Chgs: none

Period: 3π Asym: $3\pi/2$

Key pts: $(0,0)$ $(\frac{3\pi}{4}, 1)$ $(\frac{9\pi}{4}, -1)$
 $(3\pi, 0)$

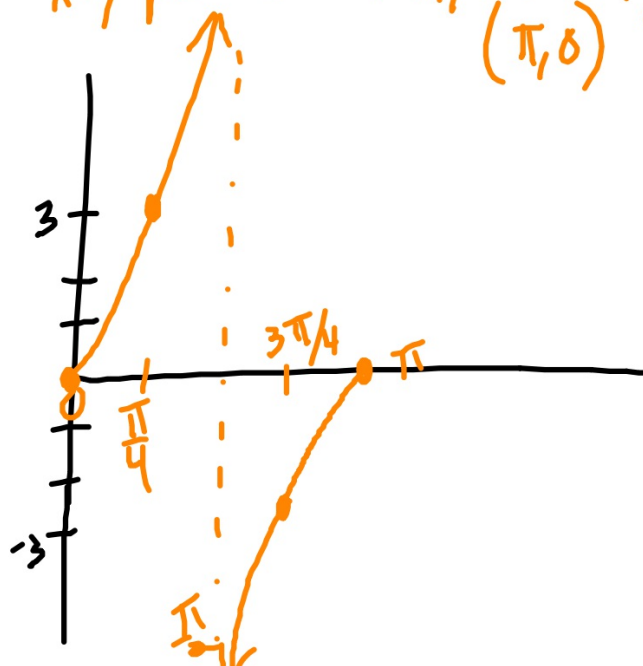


$$\textcircled{24} y = 3 \tan \theta$$

Amplitude: none Chgs: Vert. stretch

Period: π Asym: $\pi/2$

Key pts: $(0,0)$ $(\pi/4, 3)$ $(3\pi/4, -3)$
 $(\pi, 0)$



$$y = -\tan \frac{1}{2}\theta$$

amp: none chgs: Refl. x axis

Per: 2π Asm: π

key pts: $(0,0)$ $(\frac{\pi}{2}, -1)$ $(\frac{3\pi}{2}, 1)$ $(2\pi, 0)$

