



WHICH FIGURE IS WHICH?

M

1. trapezoid

~~A.~~ A figure which is made up of line segments called sides and is joined at endpoints called vertices

D

2. scalene triangle

~~B.~~ A plane figure with three angles and three sides

G

3. obtuse triangle

~~C.~~ A triangle with two equal sides and two equal angles

J

4. rectangle

~~D.~~ A triangle with no equal sides and no equal angles

B

5. triangle

~~E.~~ A triangle with one right angle

P

6. octagon

~~F.~~ A triangle with all sides and all angles equal

A

7. polygon

~~G.~~ A triangle with one obtuse angle

N

8. pentagon

~~H.~~ A polygon with four sides

L

9. square

~~I.~~ A quadrilateral whose opposite sides are parallel

O

10. hexagon

~~J.~~ A parallelogram with four right angles

C

11. isosceles triangle

~~K.~~ A parallelogram with four equal sides

F

12. equilateral triangle

~~L.~~ A rectangle with four equal sides

K

13. rhombus

~~M.~~ A quadrilateral with only one pair of parallel sides

I

14. parallelogram

~~N.~~ A five-sided polygon

H

15. quadrilateral

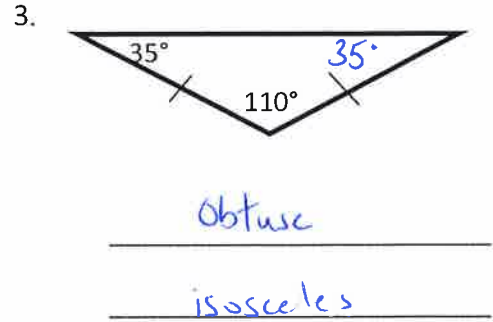
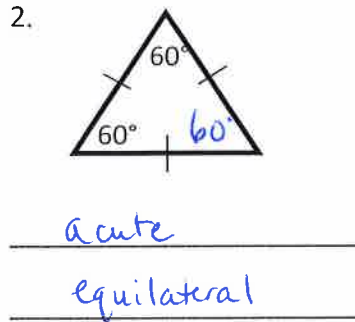
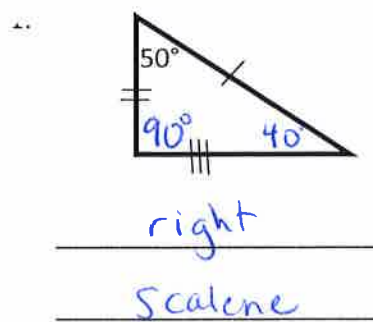
~~O.~~ A six-sided polygon

E

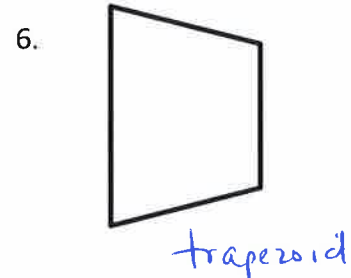
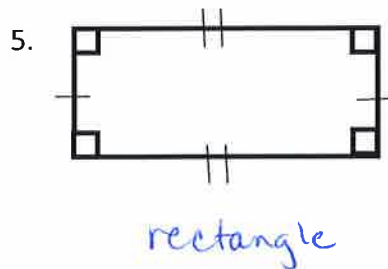
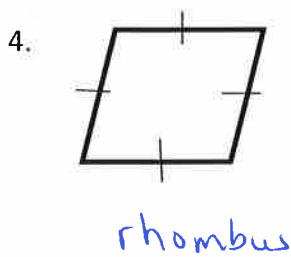
16. right triangle

~~P.~~ An eight-sided polygon

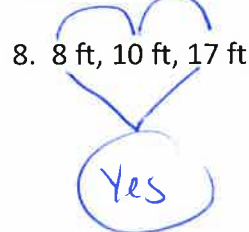
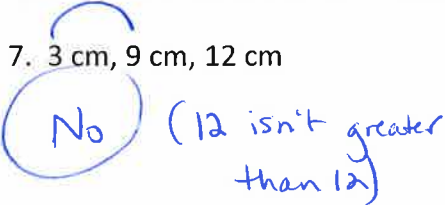
Find the missing angle. Then classify each triangle as acute, right, or obtuse, as well as equilateral, isosceles, or scalene.



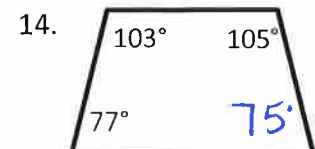
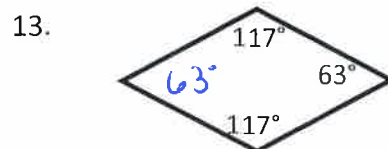
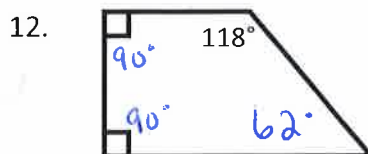
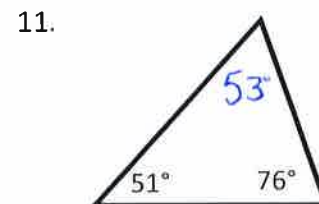
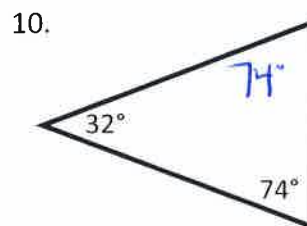
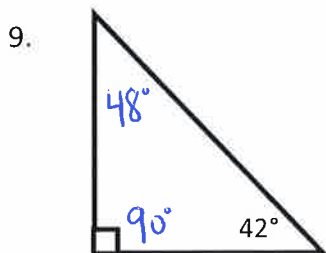
Classify each quadrilateral using the name that BEST describes the quadrilateral.



Determine if the given side lengths form a triangle.



Find the missing angle of each triangle or quadrilateral.



Getting Into Shapes

Figure out the best word to complete any statement below and write it in the boxes next to the statement. One or more of the boxes has a number. This number tells you where to put that letter in the box at the bottom of the page. Keep working and you will spell out a message. Good luck!

- ① A triangle is a ____ with three sides. P O L ¹⁰ Y G O N
- ② A polygon with four sides is a _____. Q U A D R I L A ⁴ ¹¹ T E R A L
- ③ A polygon with five sides is a _____. P E N T A ²⁰ G O N
- ④ A hexagon is a polygon with six sides and six _____. A ¹⁵ N G L E S
- ⑤ A polygon with eight sides is an _____. O C T ¹⁸ A G O N ³
- ⑥ A polygon with ten sides is a _____. ¹⁶ D E C A G O N
- ⑦ A triangle with no two congruent sides is a ____ triangle. ¹³ ¹ S C A L E N E
- ⑧ A triangle (or trapezoid) with two congruent sides is _____. I ⁷ S O S C E L E S ²³
- ⑨ A polygon with all sides congruent is _____. E Q U I ~~L~~ L A T E R A L ⁶
- ⑩ A triangle with a 90° angle is a ____ triangle. R I G ⁵ H T
- ⑪ A quadrilateral whose opposite sides are parallel is a _____. P A ¹² R A L L E L O G R A M
- ⑫ A parallelogram with four right angles is a _____. R E C T A ¹⁹ N G L E ²
- ⑬ A quadrilateral with one pair of parallel sides is a _____. T R A ²² P E Z O I D ⁸
- ⑭ A parallelogram which is equilateral is a _____. R ¹⁷ H O M B U S ²¹
- ⑮ A rectangle which is equilateral is a _____. S Q U A R E ⁹ ¹⁴

1	2	3	4	5	6	7	8	9	10	11	12	13	14	15	16	17	18	19	20	21	22	23				
C	L	O	T	H	E	S	/	D	R	Y	E	R	S	/	E	N	D	/	H	A	N	G	/	U	P	S

Shaping Up

A. Match each shape with its most specific name.



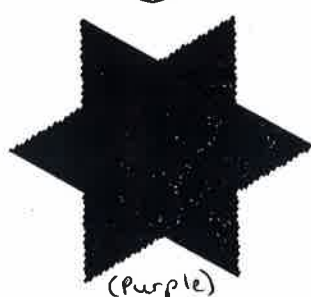
(A)

(Green)



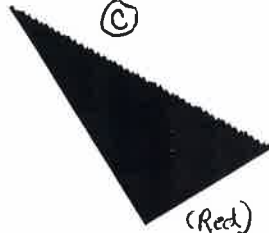
(D)

(Yellow)



(E)

(Purple)



(C)

(Red)



(B)

(Orange)



(G)

(Brown)



(F)

(Blue)

- A Rectangle
- D Equilateral Triangle
- G Quadrilateral
- C Right Triangle
- E Dodecagon
- B Rhombus
- F Isosceles Triangle

B. Coloring! Find one example of each shape above somewhere in the circle below (it *must* be the exact size too!). Color it according to its specified color. You may color the whole thing if you wish!

