

# Overhead Map – Holicong Pickup/Dropoff & Parking



HOLICONG ROAD

HOLICONG ROAD

Bus Entrance and Exit  
Bus Lane

Staff/Visitor Entrance

CB East  
Pickup Dropoff  
Entrance

Bus Platform/Entrance for students

CB East/Holicong  
Staff Parking Lot

Parent  
Pickup/  
Dropoff  
Entrance and  
Exit (tennis  
court  
entrance)

7<sup>th</sup> Grade door entrance for students  
being picked up/dropped off

Holicong/CB East  
Staff & Visitor  
Parking Lot

CB EAST HIGH SCHOOL

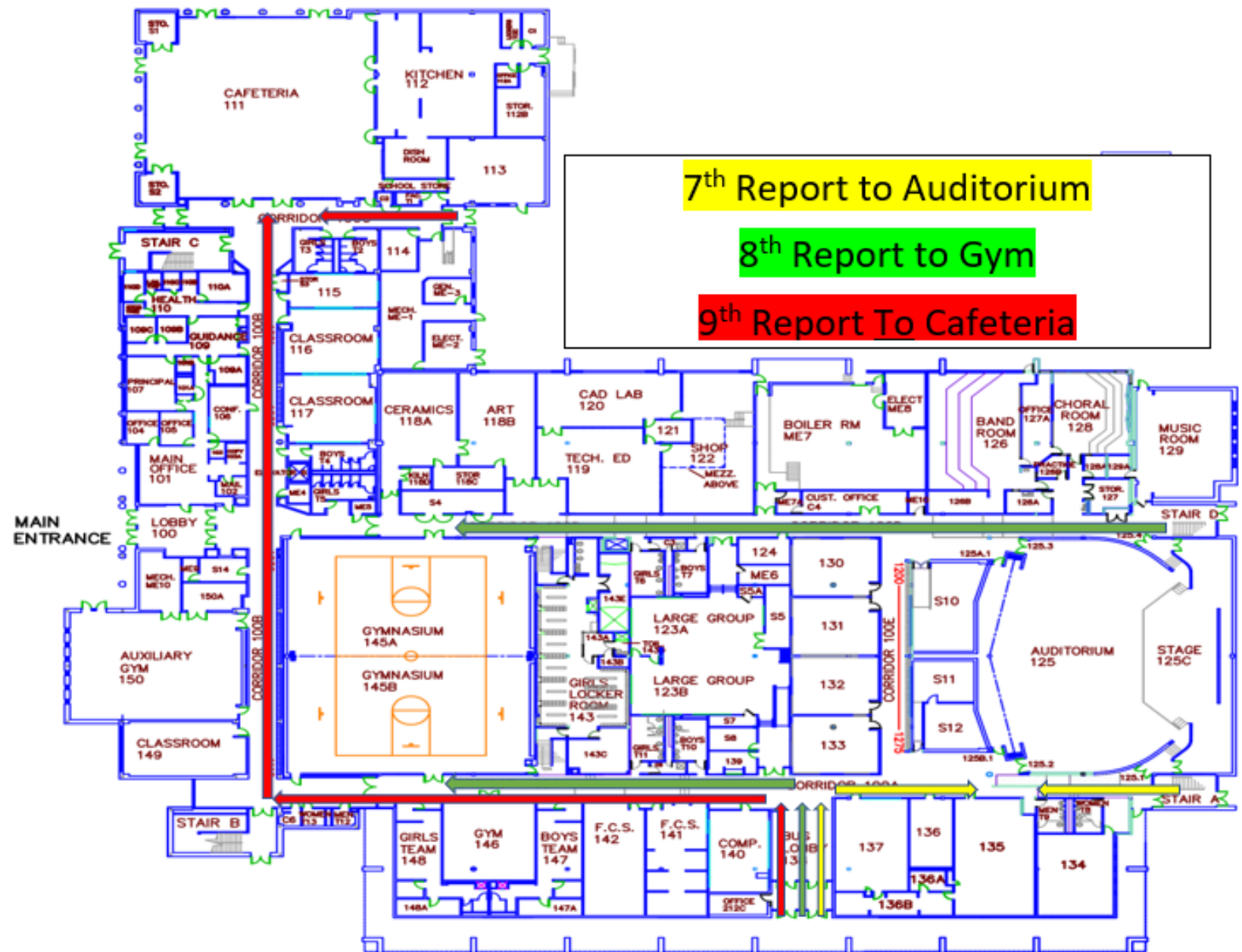
HOLICONG MIDDLE SCHOOL

8<sup>th</sup> & 9<sup>th</sup> Grade door entrance for  
students being picked up/dropped off

Front entrance “the H” –  
please do not use as parent  
pickup/dropoff – we have  
busses enter here and staff  
and student pedestrian traffic

Parents enter and  
“loop” around back  
of school to dropoff  
on sidewalk  
-8<sup>th</sup> Grade at Doors  
closest to Fields  
-7<sup>th</sup> Grade at Doors  
closest to Holicong  
Road  
– please do not  
dropoff on tennis  
court side where  
students will walk in  
front of cars –this is  
a safety issue

# Student Arrival from Busses or Parent Dropoff



# Holicong Pickup & Dropoff Process

1. Parents will enter the “tennis court”/1<sup>st</sup> entrance off of Holicong road
2. Parents will “loop around” the lot and drop students off on the sidewalk
3. 7<sup>th</sup> grade students will enter the door closest to the front of the school
4. 8<sup>th</sup> & 9<sup>th</sup> grade students will enter the door closest to the front of the school
5. Parents will exit back to Holicong Road (be careful of traffic)

# Please do not...

## **Drop off students on the tennis court side and walk across cars exiting the dropoff lane**

**Why not?** *It is a safety issue, as cars are exiting Holicong Road and may not see the student.*

**Why this occurs?** *This often occurs in the morning if students are late/in a hurry – please tell them to be patient and ensure they get out on the sidewalk.*

## **Drop off/pickup students at the “H” entrance**

**Why not?** *It is a safety issue, as we have busses at this area and it is a high traffic area for students and staff pedestrians. In the past, drivers have cut around busses. and other cars and hit/almost hit pedestrians*

**Why this occurs?** *This often occurs if students attend CB East (or both Holicong and East), as students will get out by the Science entrance at CB East.*

## **Park in the fire lanes outside front of building**

**Why not?** *These are reserved for emergency vehicles.*

**Why this occurs?** *This often occurs when parents pick up a student for an appointment and it seems “quicker.” Parents are required to come to the office when a student leaves school and we do ask to park in one of the spots in the lot closest to the H designated for staff and visitor parking.*

## **Enter/park in the bus lane**

**Why not?** *This is reserved for busses, and they have specified parking areas for dropoff and pickup.*

**Why this occurs?** *This does not happen often and occurs for field trips or parents/others that are not familiar with the Holicong procedures.*