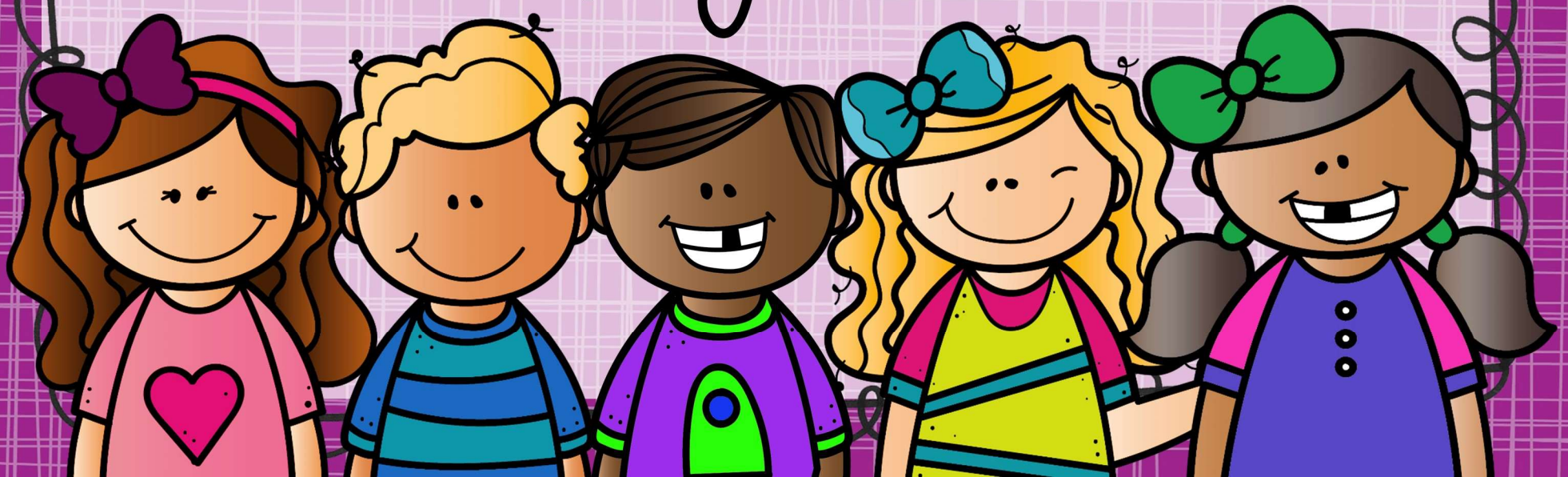


WELCOME!
to
BACK TO SCHOOL
night!



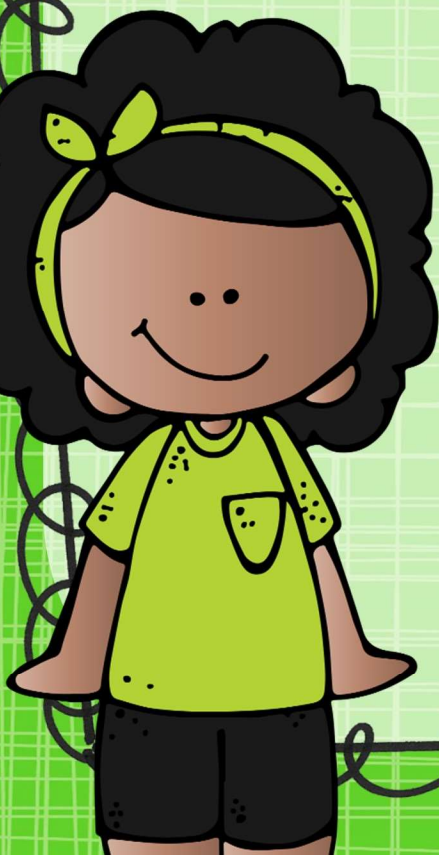
about your **TEACHER**

- 20 years
- My family
- Education
 - PSU & St. Joe's
- Interests



GOALS

- Safe, happy, respectful people
- Confident, reflective, life-long learners
- Responsible and organized
- Build classroom community
- Growing together

The logo for "Second Step" is displayed in a white rectangular box. The words "SECOND" and "Step" are written in a stylized, rounded font. "SECOND" is in orange, and "Step" is in red. A small registered trademark symbol (®) is located to the right of the word "Step".

DAILY SCHEDULE

8:35 Start

8:40 Calendar Math

9:00 Reading/Language Arts

10:55 Recess/Lunch

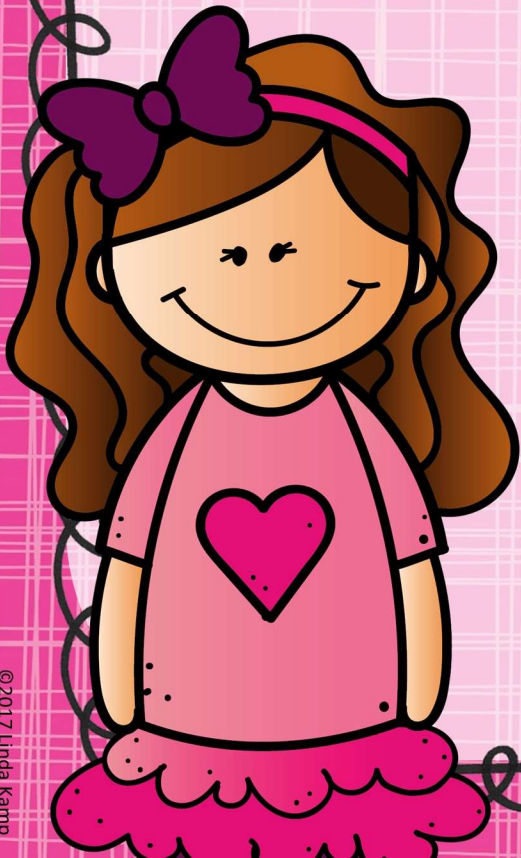
11:55 Math

1:00 Specials

1:40 Writing

2:30 Science/Social Studies

3:15 Dismissal



SPECIALS

1:00-1:40 Every Day

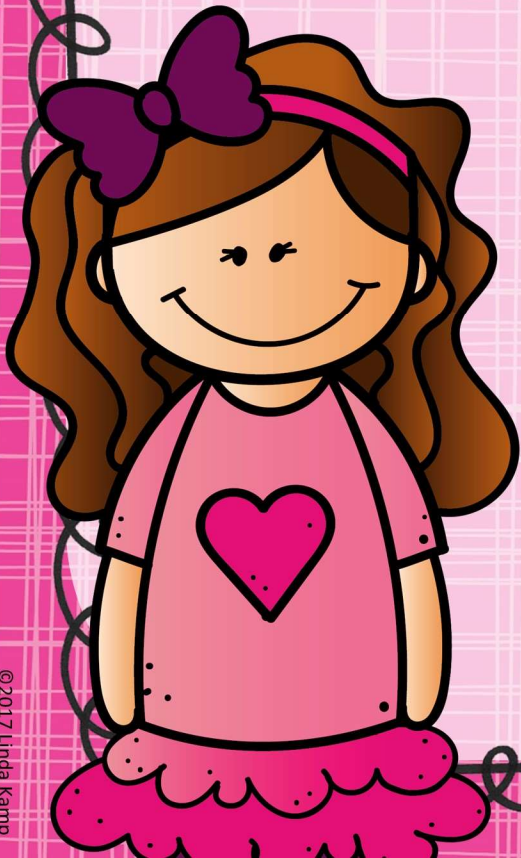
Monday: MUSIC

Tuesday: ART

Wednesday: LIBRARY

Thursday: QUEST

Friday: PE



CURRICULUM

Reading

myView Whole Group Reading, Small Group Reading, Independent Reading, Inquiry Project, Reading Horizons

Language Arts

myView Writing, Grammar, Spelling, Cursive Handwriting

Mathematics

Math In Focus, Calendar Math

Social Studies

Communities, Geography, Economics

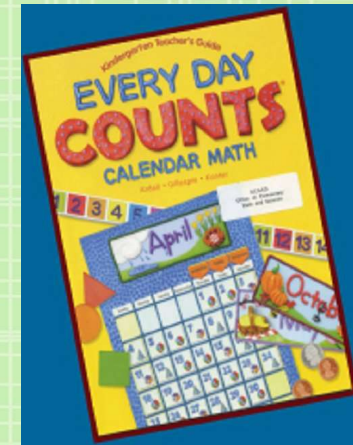
Science

Life Cycles, Solar System, Motion



MATH

Calendar Math



Trimester 1 ~ Numbers to 10,000, Addition and Subtraction within 10,000, Multiplication Tables

Trimester 2 ~ Multiplication Tables, Multiplication, Bar Models, The Four Operations, Fractions, Measurement, Area & Perimeter

Trimester 3 ~ Area & Perimeter, Graphs & Line Plots, Time, Angles, Lines & 2D figures

Elementary Mathematics

Chapter Study Guides



Fall 2022

Dear Families and Guardians,

Attached to this letter is your child's study guide for the upcoming math Chapter Test. As we spoke about at Back-to-School night, this study guide was developed for grades 1-6 based on educational research. The purpose of using a consistent study guide for all elementary students is to build appropriate study habits and promote a strong home and school connection and uniformity across our district. This study guide will provide you with all the information you need to support your child in preparing for math assessments.

This study guide contains several parts:

The **first** part is the **chart** you will see as part of every study guide. It contains the goals of the chapter along with practice problems, student self-evaluation, and **optional** additional practice problems to support you and your child in preparation for math chapter tests.

In the **second** part, you will find an individualized **study plan** to support the building of not only learning *HOW* to study, but *WHAT* to study. This study plan was created according to the self-evaluation and practice problems completed throughout the chapter and within our chapter review. Building valuable study habits is a process. Referring to this section for tips and focused study goals for the upcoming chapter test will help to build strong study habit routines which can make your child's learning experience more enjoyable.

The **third** section is for your **feedback**. Please initial that you viewed the study guide and feel free to write any comments you feel would be beneficial for your child's teacher to know about their math progress.

Please reach out with any questions. Happy studying!



Elementary Mathematics

Chapter Study Guides



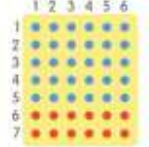
Math in Focus Reflection and Study Guide Grade 3 Chapter 4, Sections 1&2, Multiplication Tables



Name _____

Test Date: _____

Self-Evaluation Color Key: Green = I've got this! Yellow = I need some more practice. Red = I need more instruction (help) with this.

Goal	Example	Self-Evaluation	Student Resources
I can skip count by 6s.	6, 12, 18, _____, _____, _____, _____, 48, 54, 60	<input type="radio"/>	<ul style="list-style-type: none"> • Workbook pgs. 223-234 • EP&HW book pgs. 55, 59, 65, 66, 75 • Chapter Review #1
I can use known multiplication facts to find other multiplication facts.	$7 \times 6 = ?$  $5 \times 6 = \underline{\hspace{2cm}}$ $2 \times 6 = \underline{\hspace{2cm}}$ $7 \times 6 = (5 \times 6) + (2 \times 6)$ $= \underline{\hspace{2cm}} + \underline{\hspace{2cm}}$ $= \underline{\hspace{2cm}}$	<input type="radio"/>	<ul style="list-style-type: none"> • Workbook pgs. 223-234 • EP&HW book pgs. 63, 64, 65, 66
I can skip count by 7s.	7, 14, 21, _____, 35, _____, 49, _____, 63, _____	<input type="radio"/>	<ul style="list-style-type: none"> • Workbook pgs. 235-246 • EP&HW book pgs. 57, 58, 59, 76 • Chapter Review #2

Elementary Mathematics

Chapter Study Guides



My Study Plan

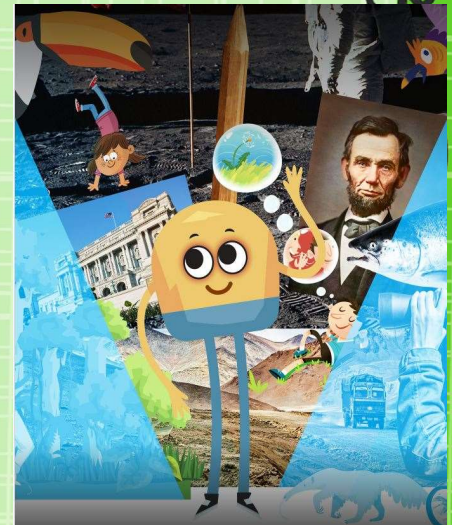
I will...

- ☐ Re-do problems from my workbook
- ☐ Make up my own practice problems
- ☐ Review with a friend
- ☐ Work with my teacher

Parent/Guardian Initials and Comments: _____

LANGUAGE ARTS

- **Shared Reading~myView**
 - Monitor comprehension
 - Build fluency
 - Make connections & inferences
 - Determine important information
 - Make predictions & summarize
 - Self-question
 - Visualize, synthesize, characterize
- **Small Group Reading**
- **Independent Reading**
- **Inquiry Projects**
- **Reading Horizons**



WRITING

- **Grammar**
- **Spelling**
- **Cursive Handwriting (Zaner-Bloser)**
- **myView**
 - Build a community of writers
 - Personal Narrative
 - How-to Informational Writing
 - Historical Fiction
 - Opinion Essay
 - Poetry

Project-Based Inquiry

Tackle Science and Social Studies themes in your literacy block. *myView* selections equip students to solve a culminating, real-world challenge.



Reading Block

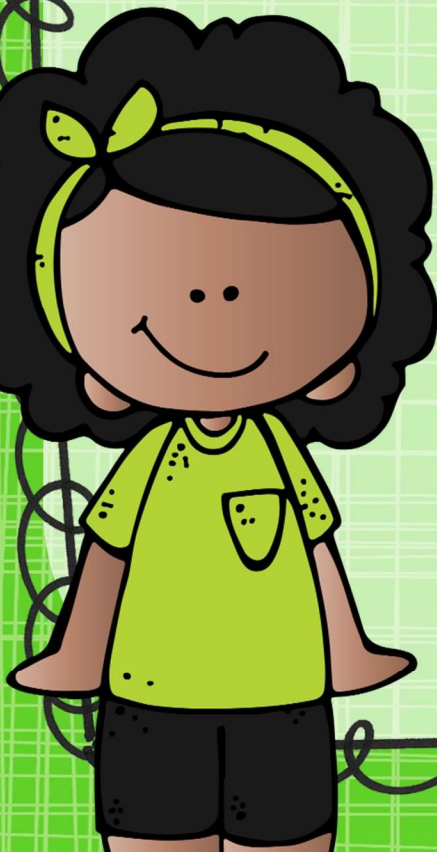
Using whole- and small-group instruction, the Reading Block follows a **gradual release model** that enables you to easily differentiate for all reading abilities.

Writing

Student authors participate in **daily minilessons** where they're immersed in genres through mentor texts and can develop their own writer's craft.

Reading-Writing Bridge

In Bridge lessons, students practice skills that are complementary to both reading and writing. There's nothing else like it.



My View/ My Perspective



Provides comprehensive, explicit instruction grounded in the Science of Reading.

Allows for the teaching of Reading and Writing with a rich underpinning of research and rigor, as it inspires creativity.

Engages all students with authentic and high interest literature and resources.

Supports all students with differentiated resources.

SOCIAL STUDIES

Social Studies Alive

- Basic Geographic Literacy
- People in Their Community
- Being an Active Member of our Community
- Economics and Our World

SCIENCE

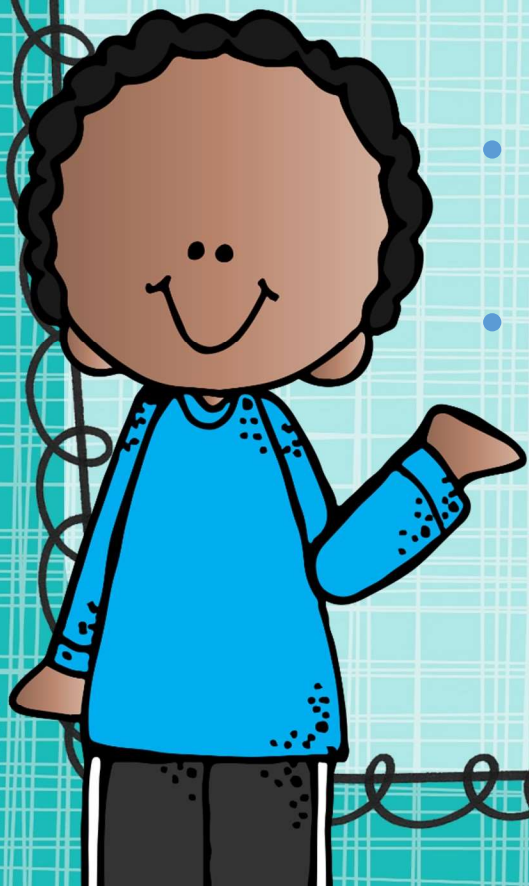
Science Companion

- Life Cycles
- Motion
- Solar System

ASSESSMENT

Online Standards-based reporting system

- 3 Trimesters, 3 report cards
 - December, March, June
- Success Standards
 - 3 2 1
- Learning Standards:
 - + M / -
- Assessments
 - Math unit tests, myView assessments, oral reading, reading responses, graded writing pieces, science/social studies quizzes & unit tests



MTSS: Multi
Tiered
System of
Support In
The
Elementary
School



Background

- MTSS is a comprehensive school improvement framework, driven by the problem-solving process, focusing on core instruction and meeting students' needs.
- Our goal is to improve performance by assessing all students, identifying specific needs early and modifying instruction quickly using evidence-based practices.
- During our team meetings, reading and math data is analyzed and discussed. This data is one point which, along with other measures, is used to inform our core instruction and make focused decisions for individual students.

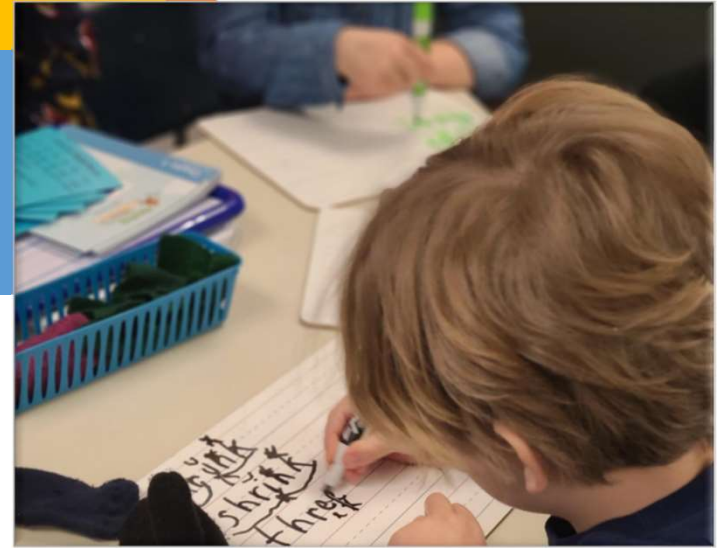


Assessment Process

Your child will take multiple assessments throughout the year including our new Star Assessment in Reading and Math.

The MTSS building team works together to review data for all students.

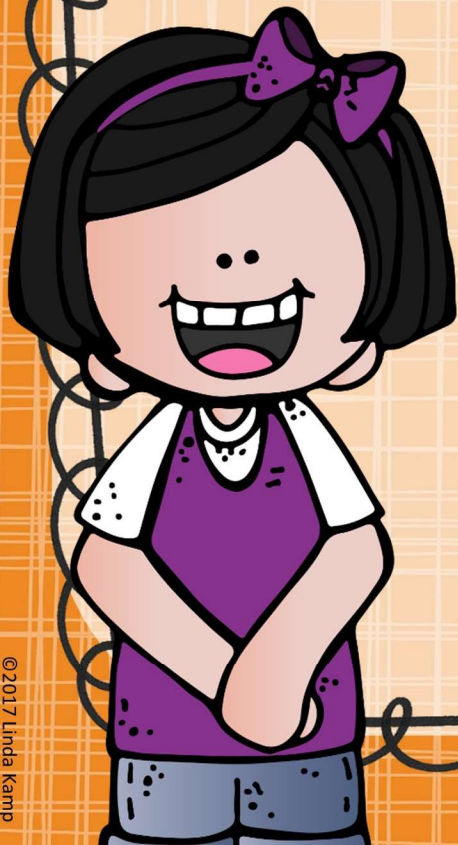
Families will be notified if extra support or enrichment is needed.



ways you can

SUPPORT OUR CLASSROOM

- Please model a positive attitude about school.
- If you have questions or concerns, please reach out to me or consider asking another parent.
- We are in need of pencils and black Expo markers.



IMPORTANT DATES

Dental Forms?

2022-2023 Central Bucks School District Calendar

August 2022						
Su	M	Tu	W	Th	F	Sa
	1	2	3	4	5	6
7	8	9	10	11	12	13
14	15	16	17	18	19	20
21	22	23	24	25	26	27
28	29	30	31			

August	
16-18	New Teacher Induction
23-25	Teacher In-service
29	FIRST DAY for Students

Staff Days (6) Student Days (3)

September 2022						
Su	M	Tu	W	Th	F	Sa
				1	2	3
4	5	6	7	8	9	10
11	12	13	14	15	16	17
18	19	20	21	22	23	24
25	26	27	28	29	30	

September	
2	CBSD CLOSED-OFFICES OPEN
5	CBSD CLOSED-DISTRICT HOLIDAY (Labor Day)
26	CBSD CLOSED-OFFICES OPEN (Rosh Hashanah)

Staff Days (19) Student Days (19)

October 2022						
Su	M	Tu	W	Th	F	Sa
						1
2	3	4	5	6	7	8
9	10	11	12	13	14	15
16	17	18	19	20	21	22
23	24	25	26	27	28	29
30	31					

October	
5	CBSD CLOSED-OFFICES OPEN (Yom Kippur)
24	CBSD CLOSED-OFFICES OPEN (Diwali)
31	Early Dismissal - Teacher In-Service in PM

Staff Days (19) Student Days (19)

November 2022						
Su	M	Tu	W	Th	F	Sa
		1	2	3	4	5
6	7	8	9	10	11	12
13	14	15	16	17	18	19
20	21	22	23	24	25	26
27	28	29	30			

November	
4	End of MP1 (early dismissal gr. 7-12) - 45 days
8	CBSD CLOSED - OFFICES OPEN (General Election)
23	No school for students/teacher in-service
24-25	CBSD CLOSED-DISTRICT HOLIDAY (Thanks. Break)

Staff Days (19) Student Days (18)

December 2022						
Su	M	Tu	W	Th	F	Sa
				1	2	3
4	5	6	7	8	9	10
11	12	13	14	15	16	17
18	19	20	21	22	23	24
25	26	27	28	29	30	31

December	
2	End of 1st Trimester (early dismissal 1-6) - 61 days
12-13	Early dismissal gr.1-6 (parent conf./no Kdg.)
14	AM Kdg. attends/PM Kdg. conferences
15	AM Kdg. conferences/PM Kdg. attends
23	CBSD CLOSED - OFFICES OPEN
26-30	CBSD CLOSED-DISTRICT HOLIDAY (Winter Break)

Staff Days (17) Student Days (16)

January 2023						
Su	M	Tu	W	Th	F	Sa
1	2	3	4	5	6	7
8	9	10	11	12	13	14
15	16	17	18	19	20	21
22	23	24	25	26	27	28
29	30	31				

January	
2	CBSD CLOSED (Winter Break)
16	CBSD CLOSED (Martin Luther King Day)
27	End of MP2 (early dismissal gr. 7-12) - 48 days

Staff Days (20) Student Days (20)

February 2023						
Su	M	Tu	W	Th	F	Sa
			1	2	3	4
5	6	7	8	9	10	11
12	13	14	15	16	17	18
19	20	21	22	23	24	25
26	27	28				

February	
17	No school for students/teacher in-service
20	CBSD CLOSED-DISTRICT HOLIDAY (Presidents' Day)

Staff Days (19) Student Days (18)

March 2023						
Su	M	Tu	W	Th	F	Sa
			1	2	3	4
5	6	7	8	9	10	11
12	13	14	15	16	17	18
19	20	21	22	23	24	25
26	27	28	29	30	31	

March	
14	End of 2nd trimester (early dismissal gr. 1-6) - 62 days
27-28	Early dismissal gr.1-6 (parent conf./no Kdg.)
29	AM Kdg. attends/PM Kdg. conferences
30	AM Kdg. conferences/PM Kdg. attends
31	End of MP3 (early dismissal gr. 7-12) - 43 days

Staff Days (23) Student Days (23)

April 2023						
Su	M	Tu	W	Th	F	Sa
						1
2	3	4	5	6	7	8
9	10	11	12	13	14	15
16	17	18	19	20	21	22
23	24	25	26	27	28	29

April	
6	No school for students/teacher in-service
7	CBSD CLOSED-DISTRICT HOLIDAY (Good Friday)
10	No school for students/teacher in-service

Staff Days (19) Student Days (17)

May 2023						
Su	M	Tu	W	Th	F	Sa
	1	2	3	4	5	6
7	8	9	10	11	12	13
14	15	16	17	18	19	20
21	22	23	24	25	26	27
28	29	30	31			

May	
16	CBSD CLOSED - OFFICES OPEN (Primary Election)
26	No school for students/teacher in-service
29	CBSD CLOSED-DISTRICT HOLIDAY (Memorial Day)

Staff Days (20) Student Days (20)

June 2023						
Su	M	Tu	W	Th	F	Sa
				1	2	3
4	5	6	7	8	9	10
11	12	13	14	15	16	17
18	19	20	21	22	23	24
25	26	27	28	29	30	

June	
15	LAST DAY for STUDENTS/Early dismissal/
	End of MP4 - 48 days/3rd Trimester - 61 days
16	Teacher In-Service Day

Staff Days (12) Student Days (11)

NOTES:
1. Total Staff Days (193). Total Student Days (184)

 **CENTRAL BUCKS**
SCHOOL DISTRICT

NOTES:

1. Total Staff Days (193), Total Student Days (184)



www.cbsd.org/1to1

COMPLETE DEVICE CHECKLIST



K-2 IPAD SETUP



GRADE K-2 IPAD ORIENTATION



TECH SUPPORT



GRADE 3 - 12 LAPTOP SETUP



GRADE 3-12 TECHNOLOGY ORIENTATION



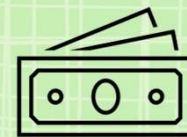
PASSWORD GUIDE



TEAMS INFORMATION



CLASSLINK



\$15



CONTACT INFO

Email me!

smenard@cbsd.org

www.cbsd.org/smenard



THANK YOU!

Please write back to your child's note.

Complete the green card.

Should you have any questions,
please use an index card to
leave a note for me.

