

2011-2012 INFORMATION PACKET



Central Bucks School District

20 Welden Drive • Doylestown • Pennsylvania • 18901
www.cbsd.org 267•893•2000



Table of Contents

Introduction	Page 2
Central Bucks Points of Pride	Page 3
Recognition Highlights	Page 4 - 6
Central Bucks School District Goals for 2011-2012	Page 7
Central Bucks at a Glance	Page 8
2011 PSSA Proficiency Levels	Page 9
2011 SAT I Results & College Statistics	Page 10
2011 SAT II Results (subject-area achievement tests)	Page 11
National Merit Competition Statistics	Page 12
A Look at the Class of 2011	Page 13
School District Map	Page 14
School District Building Directory	Page 15
Academic Calendar at a Glance	Page 16
2011 Elementary School Enrollment Data	Page 17
2011 Average Elementary School Class Size by Grade	Page 18
2011 Secondary School Enrollment Data	Page 19
Twelve-Year Comparison of Enrollment Increases	Page 20

Introduction

Here in Bucks County we have all the necessary pieces for a thriving community: the famous bucolic landscape, historic landmarks, art museums and galleries, five-star restaurants, a diverse selection of shopping, opportunities for business and industry, award-winning schools, and a convenient location. Without a strong school system however, there would be a significant piece missing. The absence of a supportive, challenging and innovative school district would greatly change the picture that has become Bucks County.

The recognition and results of the Central Bucks School District have created a reputation that crosses state boundaries and draws people to Bucks County. Central Bucks students and staff have a remarkable number of awards to their credit. Test results are consistently high across this very large district. It is impressive when hundreds of students perform well, but in Central Bucks, thousands of students are meeting rigorous expectations and proving themselves with outstanding results.

In this packet you will find the facts and data that are commonly used to describe a school district. It is people however, our staff and students, who make Central Bucks what it is. There is no doubt the reputation, results and recognition of the Central Bucks School District are of tremendous value to our community. We are glad to welcome you to our outstanding schools.

The Central Bucks School District has as part of its mission to develop capable and responsible citizens. It does so through:

● **Commitment to high academic achievement:**

- Students consistently score #1 in Bucks County on statewide tests.
- The District is routinely in the top ten of all school districts in Pennsylvania.
- Over 90% attend post secondary education.
- Over a third of high school students are enrolled in Advanced Placement classes.
- Student SAT scores rank in the top 6% of all Pennsylvania high schools.
- Over 40% of graduates are accepted at top tier colleges.
- Newsweek Magazine consistently ranks CB high schools among America's Best.

● **Programs that address the learning needs of all students:**

- Central Bucks educates over 98% of resident children in its school buildings.
- Instruction is specifically designed to meet the needs of all students.
- Students are offered real life connections through work experiences and programs at Middle Bucks Institute of Technology.
- Over 85% of students participate in extracurricular offerings.
- Students are provided specialized services including: Health and Psychological, Career/College Counseling, Special Education programs, and Creative and Performing Arts programs.

● **Promoting service and partnering with the community:**

- All schools commit to community service projects every year.
- District students and staff serve non profit agencies all across the community.
- Educational experiences are linked to local businesses, colleges, and hospitals.

- Cooperative ventures exist with local youth organizations and other community agencies.
- The school district works with local municipalities for cost savings and land preservation.

● **Commitment to innovation and continuous improvement:**

- The District has a strong emphasis on continued training for its professional staff with over 90% of CB teachers attending specialized training each summer.
- CB is home to various distinguished educators including: National Board Certified Teachers, Writing and Literature Teaching Fellows, Technology Integrators, and PA Teachers of the Year in Elementary Education and Secondary Education.
- Programs are research based and uniform among all elementary, middle and high schools.
- Over 80% of professional staff have advanced degrees beyond the bachelor's degree.

● **Focus on efficiency:**

- Included in the Top 10 highest performing school districts in the state, CB has the best student performance to education cost ratio.
- An energy efficiency initiative has reduced utility costs by over \$1M per year.
- Moody's recently reaffirmed an AA1 credit rating for the District which represents a consistent conservative approach to managing the financial affairs of the school district.
- Standard and Poor's rates the District as an "outperforming school district" which means students perform significantly higher on state tests than other schools with similar demographics.
- A nationwide study of student achievement relative to education spending conducted by The Center for American Progress recognized Central Bucks with their highest rating, "educational productivity."

District Recognition Highlights



Blue Ribbon Schools - CB East, Holicong, Tamanend & Unami
Nationally & state recognized "School to Watch", one of three selected in PA - Lenape
PA Elementary Social Studies Program of Excellence Award
PA Secondary Social Studies Program of Excellence Award
PA ASCD Award for Exemplary Practices in Supervision and Evaluation
Standard & Poor's Best Performer "Return on Resources"
PA Department of Education School Of Distinction
Newsweek Magazine Top Schools in the Nation
American Heart Association Top 100 Fundraiser Award
CB Middle Schools, American Cancer Society "Heart of Relay" Award
Kids Voting, National, Highest Number of Student Voters
Tamanend Middle School, National Service Learning Award
CB East, South and West Key Clubs, Doylestown Township Outstanding
Service to Community Award
CB East Patriot Players, Education Theater Association Outstanding
High School Theatre Troupe Award
Health and PE Program, PA Outstanding Program Award
Student Transition Employment Program "What Works in PA Schools" Award
Expansion Management Award
Environmental Education Program Award
Bus Safety Award
Red Cross "Help Can't Wait" Award
Pinnacle Award for Community Outreach and Fiscal Responsibility
Educational Excellence Fair, Recognition for Partnership Program

Staff Recognition Highlights



- Superintendent of the Year, PA
- National Board Certified Teachers, 50 (699 total in PA)
(3rd highest in PA)
- High School Principal of the Year, PA
- Middle School Teacher of the Year, PA
- New Teacher of the Year, PA, 4 award winners
- Biology Teacher of the Year, PA
- Gifted Teacher of the Year, PA
- National Finalist, Horace Mann-NEA Foundation Award, Teaching Excellence
- Outstanding Secondary Social Studies Teacher, PA
- Bucks County Poet Laureate
- Middle School Health and PE Teacher of the Year
- Philadelphia Area Spanish Teacher of the Year
- Social Studies Teacher of the Year, 2 award winners
- Finalists for Teacher of the Year, numerous nominees
- Who's Who Among Teachers, numerous candidates
- Philadelphia Flyers Community Teammate Award
- American Heart Association Rookie of the Year Award
- Central Bucks Chamber of Commerce Teacher of the Year
- Rohm and Haas Golden Flask Award for Excellence in Science Education
- Gateways SEPA Organization Young Leader Award
- March of Dimes "Women of Achievement in Education" Award
- National Endowment for the Advancement of the Arts Recognition Award
- PA Student Council Advisor of the Year
- Bucks County IU keystones Technology Integrator
- Distinguished Teaching Achievement Award fro Geography Teaching
- Penn Ambassador
- Prentice Hall Team Teaching Award
- Phillies All-Star Teacher
- Bucks County IU Community Caring Award
- Community School Grant Awards of \$168,148
- Sallie Mae Outstanding First Year Teacher Award
- Bucks County Educator of the Year, several winners
- PA School Nurse and Practitioners Assn. Regional School Nurse Award
- Brown University National Faculty Coalition Member
- Pennsylvania James Madison Fellow

Student Recognition Highlights



- 1st place, International, Intel Corp. Science Fair, \$50,000 prize
- 1st and 3rd places, National, Intel Corp. Science Fair
- 1st place, National, Poetry Writing, The Writing Conference
- Best Film, CB Chamber of Commerce Film Fest
- Best High School Documentary, CB Chamber of Commerce Film Fest
- 3rd place, National History Day Championships
- 3rd place, National, Life Smarts Consumer Challenge Team
- 1st place, Future Business Leaders of America Competition
- Numerous placements, Bucks County Oral Proficiency Competition
- 3rd place, Philadelphia Classic Programming Competition at University of Penn
- 1st place, National, Literary Magazine, American Scholastic Press Assn.
- 1st place, Art contest, Bucks County Conference and Visitor Bureau
- “Best School,” Rutgers University Model Congress
- PA Historical Society Otto F. Haas Award for Community Preservation
- 4th place, National, Individual, Physics Bowl
- 2nd place, National, Team, Physics Bowl
- Delaware Valley Science Competition scholarship winners yearly
- State Championship athletes in football, girls soccer, field hockey, track
- 1st place, National, Yearbook
- America Library of Poetry publication
- 1st place, American Literacy Council Student Poetry Contest
- 1st place, Patriot’s Pen VFW Essay contest
- 1st place, United Veterans Essay contest
- 1st place, The Writing Conference
- 1st place, USSBA Marching Band competition
- All-State Orchestra and All-State Chorus members
- State Champions, Marching Band, USSBA competition
- PMEA adjudication, Concert Band
- Bryan Scott, Buffalo Bills team member, CB Alumni
- Bryan Walsh, International author for TIME magazine, CB Alumni
- Molly Ephraim, Broadway actress, CB Alumni
- Justin Guarini, Singer/songwriter, CB Alumni

The Central Bucks Schools will provide all students with the academic and problem-solving skills essential for personal development, responsible citizenship, and life-long learning.

- 1. Strengthen the district’s educational programs and services.**
 - Gather data through surveying stakeholders to prepare for the next six year Strategic Plan.
 - Continue to emphasize the constructs of rigor, relevance and relationships throughout our curriculum, instructional practices, and assessments.
 - Monitor the implementation of new and revised curricula K-12.
 - Continue to incorporate reading and writing strategies within all content areas.
 - Establish consistent grading practices and other measures of student proficiency for secondary students.
 - Re-draft elementary and secondary school schedules to maximize efficiency.

- 2. Improve the availability, use, and integration of technology throughout the district in both instructional and non-instructional areas.**
 - Continue the use of technology to improve efficiency of district operations, communication, management and security.
 - Establish contemporary policies to guide staff and student use of technology.
 - Investigate expanded wireless access and student-owned device access to the network.

- 3. Promote positive relationships between our schools and community.**
 - Improve district-wide communication by expanding the use of electronic media and promote Points of Pride.
 - Utilize security systems and continue to coordinate response efforts with local municipalities.
 - Monitor new walking routes and bus stop consolidation plans.

- 4. Respond to the educational needs of school-aged children through plans designed to provide safe, productive, and flexible learning environments.**
 - Continue to implement the long range capital improvement plan to provide resources to the existing facilities.
 - Finalize construction for additions/renovations to CB East.
 - Continue to utilize “Green Practices” to generate revenue, effectively manage our facilities, and practice environmental stewardship.

- 5. Strengthen the financial base of the district.**
 - Direct time and resources to assist with shaping legislative issues dealing with education.
 - Pursue ways to enhance revenues, improve efficiency, and reduce expenditures while maintaining quality programs.
 - Participate in the Bucks/Montgomery County Labor/Management Healthcare Consortium.
 - Participate in the Bucks/Montgomery County Regional transportation study.
 - Develop funding for long term building renovation needs without borrowing money.

LOCATION, SIZE, AND POPULATION

Central Bucks is a suburban school district located in the heart of Bucks County, with administrative offices in Doylestown, the county seat. The district includes **nine municipalities**: the Boroughs of Chalfont, Doylestown, and New Britain; and the Townships of Buckingham, Doylestown, New Britain, Plumstead, Warrington, and Warwick. Central Bucks has an area of **122 square miles** and a population of over **102,000**.

SCHOOLS

The district has **fifteen elementary schools**, Grades K-6; **five middle schools**, Grades 7-9; and **three high schools**, Grades 10-12.

2011 ENROLLMENT

Central Bucks is the third largest district in Pennsylvania.
Elementary: 10,115 ----- 270 less than 2010
Middle School: 5,013----- 97 less than 2010
High School: 4,964----- 19 more than 2010
Total Enrollment: 20,092----- 348 less than 2010

2011 ELEMENTARY CLASS SIZE AVERAGES

Elementary School: 23.9

STAFF

Central Bucks has **2,841 full and part-time employees**, including **1,365 professional staff members** (full-time equivalent) with an average experience slightly over 13 years. The percent of professional staff members with **master's degrees or higher** is 80%. Staff includes supervisors for reading/elementary technology, research/evaluation, and special education; district coordinators for language arts, mathematics, gifted education, science/secondary technology, social studies, world language, art, music, and physical education/health; psychologists; elementary and secondary counselors; and **3 FTE staff development facilitators**, who work directly with teachers.

CURRICULUM

Central Bucks has a **district-wide K-12 curriculum**. The elementary program includes time allocations for all subjects; literature-based reading instruction, the writing process, Everyday Mathematics program, hands-on-science, an award-winning social studies program, computer keyboarding and beginning application skills, and performance assessments in third and sixth-grades.

The **middle school program** includes interdisciplinary team teaching, exploratory courses, service learning, a daily activity period, two years of computer applications, two years of world language, math sequence through Geometry/Trigonometry 2, and a ninth grade performance assessment required for graduation.

The **high school program** includes block scheduling, a required

graduation project, computer applications and programming; AP courses in American History, Biology, Calculus AB and BC, Chemistry, Comparative Government, Computer Science A, English Literature, European History, Environmental Science, Macroeconomics, Music Theory, Physics: Newtonian Mechanics, Physics: Electricity and Magnetism, English, Spanish, French & German Language, and Statistics; and opportunity for a half-day program at Middle Bucks Institute of Technology.

SPECIAL PROGRAMS

Special programs include special education classes, programs for mentally gifted students, Instructional Support Teams, Student Assistance Teams, Reading Recovery and other reading intervention programs, Title 1 and district remediation programs, before-and after-school care for elementary students, and summer remedial and enrichment programs.

COLLEGE-BOUND and NATIONAL MERIT STATISTICS

Class of 2011 attending 4-year, 2-year, community college, or special training: 91%

Four-year college: 75%

Class of 2011 National Merit Semi-Finalists: 16

Class of 2011 National Merit Commended Students: 39

2011 SAT I DISTRICT AVERAGES

SAT I Score: 1647 (national average: 1500)

Percentage taking the SAT: 87%

2011 PENNSYLVANIA SYSTEM OF STATE ASSESSMENT

Percentage Scoring Advanced or Proficient (i.e. meeting Standards)

GRADE *	SUBJECT	All CB	State
		Students	All Students
Grade 5	Math	92%	76%
	Reading	87%	67%
	Writing	93%	67%
Grade 8	Math	94%	77%
	Reading	96%	82%
	Writing	96%	73%
Grade 11	Math	85%	60%
	Reading	91%	69%
	Writing	97%	85%

*See page 9 of Information Packet for scores in all grades tested.

BUDGET, TAX RATES, AND PER-PUPIL COSTS

2011-2012 Budget: \$280,637,079.00

Real Estate Millage: 120.8 mills

Earned Income Tax: 1% (shared equally with municipalities)

Per-Pupil Costs: \$13,968 (total budget divided by total enrollment)

**2011 PENNSYLVANIA SYSTEM OF STATE ASSESSMENT
PROFICIENCY LEVELS**

	STATEWIDE % Students Achieving PROFICIENT or ADVANCED Levels	CENTRAL BUCKS % Students Achieving PROFICIENT or ADVANCED Levels
Mathematics		
Grade 3	84%	95%
Grade 4	85%	95%
Grade 5	76%	92%
Grade 6	79%	95%
Grade 7	79%	94%
Grade 8	77%	94%
Grade 11	60%	85%
Reading		
Grade 3	77%	90%
Grade 4	73%	91%
Grade 5	67%	87%
Grade 6	70%	91%
Grade 7	76%	94%
Grade 8	82%	96%
Grade 11	69%	91%
Writing		
Grade 5	67%	93%
Grade 8	73%	96%
Grade 11	85%	97%
Science		
Grade 4	83%	94%
Grade 8	58%	85%
Grade 11	41%	66%

SAT I RESULTS
Class of 2011

Averages of Students' MOST RECENT SAT I Scores

The following scores are averages of SAT I scores earned by students in the Class of 2011 on their most recent administration of the SAT I as reported by ETS.

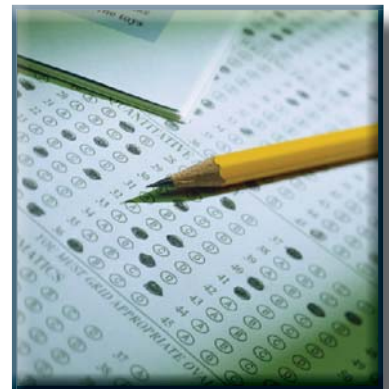
	CRITICAL READING	MATH	WRITING	TOTAL
District Average	541	561	545	1647
Pennsylvania	493	501	479	1473
National Average	497	514	489	1500

COLLEGE STATISTICS
Class of 2011

TOTAL DISTRICT

Students enrolled for further education and training

CLASS	COLLEGE-BOUND
2007	93%
2008	92%
2009	93%
2010	92%
2011	91%



SAT II RESULTS
Subject-Area Achievement Tests
Class of 2011

TEST	NUMBER of STUDENTS	MEAN SCORE
Math Level 1	107	656
Math Level 2	120	683
United States History	98	670
English Literature	89	645
Chemistry	55	658
Physics	19	644
Spanish	16	550
World History	16	579
French	11	536

Reported for subjects with 10+ test-takers



NATIONAL MERIT COMPETITION STATISTICS

CLASS	Graduates	Semi-Finalists	Commended	TOTAL
2001	1,087	12	26	38
2002	1,148	12	25	37
2003	1,248	6	16	22
2004	1,278	4	24	28
2005	1,423	10	31	41
2006	1,558	10	21	31
2007	1,588	12	29	41
2008	1,600	9	34	43
2009	1,527	15	34	49
2010	1,524	18	36	54
2011	1673	16	39	55

A Look at the Class of 2011

1,673 graduates
558 Scholar's Diplomas
305 Presidential Awards for Educational Excellence
420 awards and scholarships
16 National Merit Finalists / 39 Commended students
Highest PSSA scores in Bucks County
Combined average SAT scores 1647
91% will pursue further education
Graduation rate of 98.9%

Schools Most Attended by Central Bucks Graduates

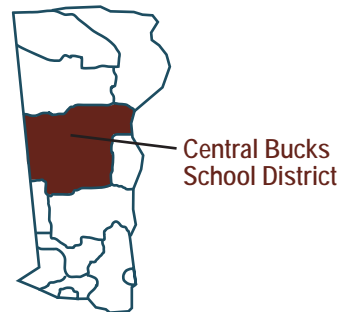
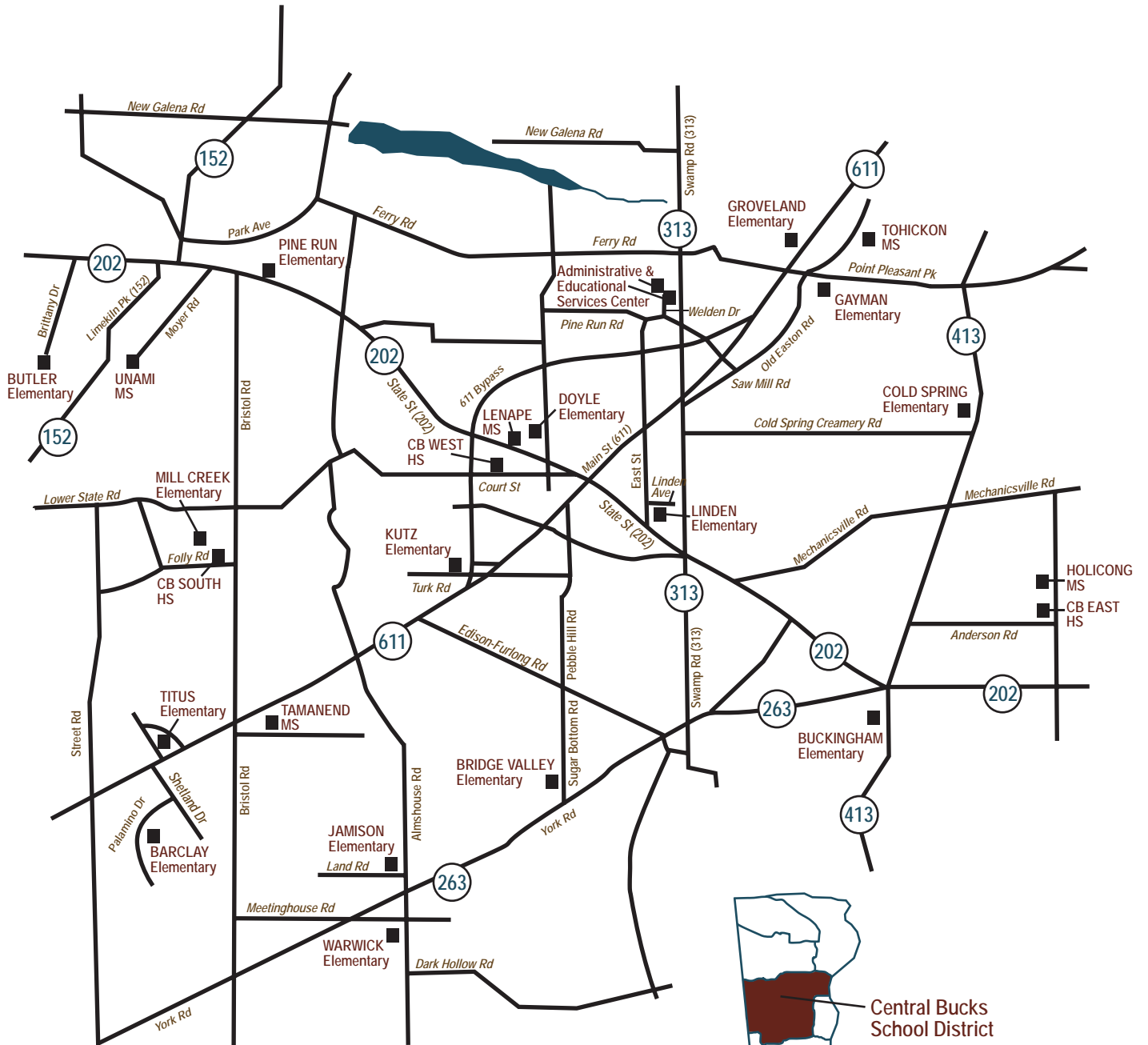
Penn State University (all campuses)	Shippensburg University
Temple University	Kutztown University
University of Pittsburgh	University of Delaware
Bloomsburg University	Indiana University of PA
West Chester University	St. Joseph's University
Drexel University	Bucks County Community College

Top Intended College Majors

Health & Clinical Services	16%
Business Management / Marketing	14%
Undecided	12%
Education	11%
Engineering	8%
Social Science & History	8%
Visual & Performing Arts	7%
Biological & Biomedical Sciences	4%

Central Bucks District Map

20 Welden Drive, Doylestown, PA 18901
267-893-2000



Bucks County School Districts
(Intermediate Unit #22)

Central Bucks School District Building Directory

DISTRICT OFFICES

Administrative Services Center

20 Welden Drive
Doylestown, PA 18901-2359
(267) 893-2000

N. Robert Laws, Ph.D.
Superintendent, 2001
David P. Weitzel, Ed.D.
Asst. Sup. for Elementary Ed, 2002
Nancy B. Silvius, Ed.D.
Asst. Sup. for Secondary Ed, 2003
David W. Matyas
Business Administrator, 2000
Gilbert R. Martini, Jr.
Dir. of Human Resources, 2084
Carol M. Counihan
Community Relations, 2005

Educational Services Center

16 Welden Drive
Doylestown, PA 18901
(267) 893-2000

Dale D. Scafuro
Director of Student Services, 2021
Edward Sherretta
Dir. of Inform. Technology, 2100

• Curriculum Supervisors

Paul K. Beltz
Sup. of Reading, Federal Projects, &
Elem. Technology, Research &
Evaluation, 2041
George Mehler
Science & Sec. Technology, 2041

• Curriculum Coordinators

Pam Pensabene
Elem. Language Arts,
PEN & Library, 2051
Alyssa Walloff
Secondary Language Arts,
PEN & Library, 2051
Richard Kratz
Math, 2051
Scott Berger
Social Studies, 2051
Stacy Gray
World Language, 2051

• Staff Development

Kelly Carter
Elementary, 5744
Jason Jaffe
Technology, 5761
Corinne Sikora
Secondary & Special Ed, 2048

• Community School

(267) 893-5700
Rick Mayberry,
Community Education
Kathy Heffron,
Child Care Coordinator

Operations Center

320 West Swamp Road
Doylestown, Pennsylvania 18901
(267) 893-4020
Scott Kennedy
Director of Operations

Transportation Office

(267) 893-4000
Ronald Murray
Director of Transportation
James Czyz
Transportation Manager

ELEMENTARY SCHOOLS

John Barclay Elementary School

2015 Palomino Drive
Warrington, PA 18976
(267) 893-4100
Daniel P. Estep, *Principal*

Bridge Valley Elementary School

2280 Sugar Bottom Road
Furlong, PA 18925
(267) 893-4200
Nadine M. Garvin, Ed.D., *Principal*
Matthew D. Croyle, *Asst. Principal*

Buckingham Elementary School

Box 158, 2414 Durham Road
Buckingham, PA 18912
(267) 893-4200
Karl T. Funseth, *Principal*

Simon Butler Elementary School

200 Brittany Drive
Chalfont, PA 18914
(267) 893-4250
Joseph P. Brereton, *Principal*

Cold Spring Elementary School

4150 Durham Road
Doylestown, PA 18901
(267) 893-3800
Shawn M. Ortman, *Principal*

Doyle Elementary School

260 North West Street
Doylestown, PA 18902
(267) 893-4300
Susan L. Salvesen, *Principal*

Gayman Elementary School

4440 Point Pleasant Pike
Doylestown, PA 18902
(267) 893-4350
Brian A. Finger, *Principal*

Groveland Elementary School

1100 North Easton Road
Doylestown, PA 18902
(267) 893-4600
David Heinemann, *Principal*
Kathleen Fantasky, *Dean of Students*

Jamison Elementary School

2090 Land Road
Jamison, PA 18929
(267) 893-3500
Lois A. Benton, *Principal*

Paul W. Kutz Elementary School

1950 Turk Road, RD #3
Doylestown, PA 18901
(267) 893-3900
Jeanann Kahley, Ed.D., *Principal*

Linden Elementary School

480 Linden Avenue
Doylestown, PA 18901
(267) 893-4400
Susan B. Klimpl, *Principal*

Mill Creek Elementary School

638 Bellflower Boulevard
Warrington, PA 18976
(267) 893-3600
Leonard H. Schwartz, *Principal*
Michael R. Testani, *Asst. Principal*

Pine Run Elementary School

383 West Butler Avenue
New Britain, PA 18901
(267) 893-4450
Amanda Mumford, Ed.D., *Principal*

Florence D. Titus Elementary School

2333 Lower Barnes Road
Warrington, PA 18976
(267) 893-4500
Carol E. Robinson, *Principal*

Warwick Elementary School

1340 Almshouse Road
Jamison, PA 18929
(267) 893-4050
Chad M. Watters, *Principal*

MIDDLE SCHOOLS

Holicong Middle School

2900 Holicong Road
Doylestown, PA 18902
(267) 893-2700
Jason H. Bucher, *Principal*
Stephen P. Cashman,
Asst. Principal

Lenape Middle School

313 West State Street
Doylestown, PA 18901
(267) 893-2800
H. Nicholas Chubb, Ed.D., *Principal*
Geanine N. Saullo, *Asst. Principal*

Tamanend Middle School

1492 Stuckert Road
Warrington, PA 18976
(267) 893-2900
Cheryl Leatherbarrow, *Principal*
Timothy P. Donovan, *Asst. Principal*

Tohickon Middle School

5051 Old Easton Road
Doylestown, PA 18901
(267) 893-3300
Karen Wychock, *Principal*
Kevin R. Marton, *Asst. Principal*

Unami Middle School

160 South Moyer Road
Chalfont, PA 18914
(267) 893-3400
David A. Bolton, *Principal*
John C. Murtha, *Asst. Principal*

SENIOR HIGH SCHOOLS

Central Bucks High School East

2804 Holicong Road
Doylestown, PA 18902
(267) 893-2300
Abram M. Lucabaugh, *Principal*
J. Luke Hadfield, Martin Hayes
Kevin T. Shillingford,
House Principals

Central Bucks High School South

1100 Folly Road
Warrington, PA 18976
(267) 893-3000
Scott Davidheiser, *Principal*
Michael James, William J. Miles,
Maria Reitano, *House Principals*

Central Bucks High School West

375 West Court Street
Doylestown, PA 18901
(267) 893-2500
J. Kevin Munnelly, *Principal*
Todd D. Cantrell,
Brian Caughie,
Theodore M. Marcinko,
House Principals

Middle Bucks Institute of Technology

2740 Old York Road
Jamison, PA 18929
(215) 343-2480

2011-2012 Central Bucks School District Academic Calendar

August / September							October							November						
S	M	T	W	Th	F	S	S	M	T	W	Th	F	S	S	M	T	W	Th	F	S
26	27	28	△	△	31	1		1	2	3	4	5	6					1	2	3
2	○	4	5	6	7	8	7	8	9	10	11	12	13	4	5	△	7	8	□	10
9	10	11	12	13	14	15	14	15	16	17	18	19	20	11	12	13	14	15 ^K	16 ^K	17
16	○	18	19	20	21	22	21	22	23	24	25	26	27	18	△	△	△	○	○	24
23	24	25	○	27	28	29	28	29	30	31				25	26	27	28	29	30	
30																				
29,30 Staff Development 3 Labor Day/SCHOOL HOLIDAY 4 First Day of School for grades K-6, 7, 10 5 All Students Report 17 Rosh Hashanah/SCHOOL HOLIDAY 26 Yom Kippur/SCHOOL HOLIDAY							15-19 Celebrate Education Week							6 Election Day/Staff Development Day 9 Early Dismissal; End of 1st Marking Pd (46 days) 15,16 NO Kindergarten / K Parent Conferences 16 Report Cards Distributed 19-21 Staff Development Days/Conferences 22,23 Thanksgiving Recess/SCHOOL HOLIDAY						
Student days (17) - teacher days (19)							23 (total 40) - 23(total 42)							16(total 56) - 20(total 62)						

December							January							February						
S	M	T	W	Th	F	S	S	M	T	W	Th	F	S	S	M	T	W	Th	F	S
						1			○	2	3	4	5						△	2
2	3	4	5	6	7	8	6	7	8	9	10	11	12	3	4	5	6	7	8 ^R	9
9	10	11	12	13	14	15	13	14	15	16	17	18	19	10	11	12	13	14	15	16
16	17	18	19	20	21	22	20	○	22	23	24	25	26	17	○	19	20	21	22	23
23	○	○	○	○	○	29	27	28	29	30	□	↓	31	24	25	26	27	28		
30	○																			
9-16 Hanukkah 25 Christmas Day 12/24 thru 1/1 WINTER RECESS							1 New Year's Day 2 School Resumes 21 Martin Luther King Jr. Day/SCHOOL HOLIDAY 31 Early Dismissal/End of 2nd Marking Pd (46 days)							1 Staff Development Day 8 Report Cards Distributed 18 President's Day/SCHOOL HOLIDAY						
15 (total 71) - 15(total 77)							21 (total 92) - 21(total 98)							18 (total 110) - 19 (total 117)						

March							April							May							
S	M	T	W	Th	F	S	S	M	T	W	Th	F	S	S	M	T	W	Th	F	S	
						1	2		△	2 ^K	3 ^K	4	5	6				1	2	3	4
3	4	5	6	7	8	9	7	8	9	10	11	□	↓	13	5	6	7	8	9	10	11
10	11	12	13	14	15	16	14	15	16	17	18	19 ^R	20	12	13	14	15	16	17	18	
17	18	19	20	21	22	23	21	22	23	24	25	26	27	19	20	21	22	23	24	25	
24	25	26	27	△	○	30	28	29	30					26	○	28	29	30	31		
31																					
3/26-4/2 Passover 28 Staff Development/Conferences 29 Good Friday/SCHOOL HOLIDAY 31 Easter Sunday							1 Staff Development/Conferences 2,3 NO Kindergarten / K Parent Conferences 12 Early Dismissal; End of 3rd Marking Pd (46 days) 19 Report Cards Distributed							27 Memorial Day/SCHOOL HOLIDAY							
19 (total 129) - 20 (total 137)							21 (total 150) - 22 (total 159)							22 (total 172) - 22 (total 181)							

June							Key			
S	M	T	W	Th	F	S				
						1	○	Student/Teacher Holiday	↓	End of Marking Period
2	3	4	5	6	7	8	△	Staff Development/Parent Conference/Exhibitions	R	Report Cards Distributed
9	10	11	↓	13	14	15	□	Early Dismissal, Grades 1-12	K	No Kindergarten/Additional Kindergarten Parent Conferences
16	17	□	△	△	△	22	NO Kindergarten on Nov. 15 & 16 & Apr. 2 & 3 for additional Parent Conferences. NO PM Kindergarten on Nov. 9 & Jan. 31 NO AM Kindergarten on April 12 & June 18 - PM Kindergarten attends in the morning.			
23	24	25	26	27	28 ^R	29	NOTE: Inclement Weather make-up school days will be scheduled for June 19, 20, 21 - as needed.			
30							184 Student Days - 193 Scheduled Teacher Days			
18 Early Dismissal/End of 4th Marking Pd (46 days) 28 Report Cards Distributed							Approved by School Board 1/24/12			
12 (total 184) - 12 (total 193)										

ENROLLMENT DATA: Elementary Schools

Elementary Schools	K	*Ekdg	Grade 1	Grade 2	Grade 3	Grade 4	Grade 5	Grade 6	Subtotal	FT Life Skills	FT Learning Support	FT Emotional Support	FT Autistic Support	FT Multi-Handicap	Total
Barclay*	60	15	81	57	70	62	83	88	516						516
# of sections	3	1	4	3	3	3	3	3	23						
Bridge Valley	69		123	121	130	133	130	143	849				39		888
# of sections	3		5	5	5	5	5	5	33				7		
Buckingham	50		82	79	75	76	77	90	529				24		553
# of sections	3		4	3	3	3	3	4	23				3		
Butler	95		138	127	110	109	114	116	809						809
# of sections	5		6	5	5	4	4	5	34						
Cold Spring	67		79	108	109	118	127	149	757	7			17		781
# of sections	3		4	5	4	5	5	5	31	1			2		
Doyle	59		75	55	78	65	80	76	488						488
# of sections	3		3	3	3	3	3	3	21						
Gayman	52		66	72	83	89	84	74	520		9				529
# of sections	3		3	3	4	3	3	3	22						
Groveland*	70	15	110	143	156	148	163	155	960					8	968
# of sections	3	1	4	6	6	6	6	6	38					1	
Jamison	59	10	81	98	101	96	110	120	675						675
# of sections	3		4	4	4	4	4	5	28						
Kutz	85		83	99	70	88	99	85	609				21		630
# of sections	4		4	4	3	3	4	3	25				3		
Linden	73		67	59	66	77	78	72	492		18	27			537
# of sections	3		3	3	3	3	3	3	21		3	3			
Mill Creek	99		136	168	153	165	179	183	1083						1083
# of sections	5		6	7	6	6	7	7	44						
Pine Run	63		76	77	64	78	79	79	516				10		526
# of sections	3		3	3	3	3	3	3	21				2		
Titus	75		88	87	98	84	99	89	620			19			639
# of sections	4		4	4	4	3	4	4	27			2			
Warwick*	42	5	68	86	67	58	59	78	463				30		493
# of sections	2	1	3	4	3	3	3	3	22				4		
TOTALS	1018	45	1353	1436	1430	1446	1561	1597	9886	7	27	46	141	8	10,115
# of sections	50	3	60	62	59	57	60	62	413						

**2011 Average Elementary Class Size
by Grade Level**

Grades	K	*Ekdg	1	2	3	4	5	6	School Average
Policy Range	15-24		18-28	18-28	18-28	20-30	20-30	20-30	
Barclay	20.0	15.0	20.3	19.0	23.3	20.7	27.7	29.3	22.4
Bridge Valley	23.0		24.6	24.2	26.0	26.6	26.0	28.6	25.7
Buckingham	16.7		20.5	26.3	25.0	25.3	25.7	22.5	23.0
Butler	19.0		23.0	25.4	22.0	27.3	28.5	23.2	23.8
Cold Spring	22.3		19.8	21.6	27.3	23.6	25.4	29.8	24.4
Doyle	19.7		25.0	18.3	26.0	21.7	26.7	25.3	23.2
Gayman	17.3		22.0	24.0	20.8	29.7	28.0	24.7	23.6
Groveland	23.3	15.0	27.5	23.8	26.0	24.7	27.2	25.8	25.3
Jamison	19.7		20.3	24.5	25.3	24.0	27.5	24.0	24.1
Kutz	21.3		20.8	24.8	23.3	29.3	24.8	28.3	24.4
Linden	24.3		22.3	19.7	22.0	25.7	26.0	24.0	23.4
Mill Creek	19.8		22.7	24.0	25.5	27.5	25.6	26.1	24.6
Pine Run	21.0		25.3	25.7	21.3	26.0	26.3	26.3	24.6
Titus	18.8		22.0	21.8	24.5	28.0	24.8	22.3	23.0
Warwick	21.0	15.0	22.7	21.5	22.3	19.3	19.7	26.0	21.5
DISTRICT AVERAGE	20.4	15.0	22.6	23.2	24.2	25.4	26.0	25.8	23.9

ENROLLMENT DATA: Secondary Schools

Middle School	Grade 7	Grade 8	Grade 9	TOTAL
Holicong	399	414	380	1,193
Lenape	274	306	291	871
Tamanend	316	301	319	936
Tohickon	370	364	354	1,088
Unami	309	305	311	925
Middle School Totals	1,668	1,690	1,655	5,013

High School	Grade 10	Grade 11	Grade 12	TOTAL
CB East	568	548	526	1,642
CB South	648	607	607	1,862
CB West	517	453	490	1,460
High School Totals	1,733	1,608	1,623	4,964

Special needs students included in grade level.

Total Middle School Enrollment: 5,013 Total High School Enrollment: 4,964

Total SECONDARY ENROLLMENT: 9,977

2011 ENROLLMENT SUMMARY

2011 Elementary Enrollment: 10,115

2011 Secondary Enrollment: 9,977

2011 TOTAL ENROLLMENT: 20,092

**Twelve-Year Comparison
of Enrollment Increases**

	2000	2001	2002	2003	2004	2005	2006	2007	2008	2009	2010	2011
EL	9,720	9,897	10,125	10,302	10,515	10,641	10,734	10,730	10,593	10,513	10,385	10,115
	+334	+177	+228	+177	+213	+126	+93	-4	-137	-80	-128	-270
MS	4,004	4,293	4,485	4,705	4,678	4,800	4,860	4,920	4,944	5,055	5,110	5,013
	+137	+289	+192	+220	-27	+122	+60	+60	+24	+111	+55	-97
HS	3,581	3,733	3,939	4,082	4,393	4,585	4,753	4,744	4,859	4,888	4,945	4,964
	+259	+152	+206	+143	+311	+192	+168	-9	+115	+29	+57	+19
K-12	17,305	17,923	18,549	19,089	19,586	20,026	20,347	20,394	20,396	20,456	20,440	20,092
	+730	+618	+626	+540	+497	+440	+321	+47	+2	+60	-16	-348

Ten-Year Summary - 2002 to 2011

Elementary enrollment increased by 395 Students.

Middle School enrollment increased by 1,009 Students.

High School enrollment increased by 1,383 Students.

District enrollment increased by 2,787 Students.

Five-Year Summary - 2007 to 2011

Elementary enrollment decreased by 615 Students.

Middle School enrollment increased by 93 Students.

High School enrollment increased by 220 Students.

District enrollment decreased by 302 Students.

Central Bucks School District
20 Welden Drive • Doylestown • Pennsylvania • 18901
267•893•2000

